



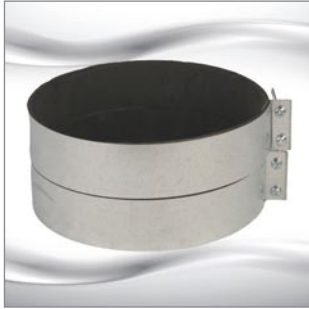
CFMTM
CONTINENTAL FAN

*better AIRFLOW by DESIGN*TM

Residential Fans & Air Purifiers



Fan Accessories



Mounting Clamps for Rigid Duct

MC mounting clamps are designed for use with rigid duct. The foam neoprene layer creates an air tight and solid installation for in-line duct fans.

- MC100 Mounting Clamps for Rigid 4" Duct (2pc)
- MC125 Mounting Clamps for Rigid 5" Duct (2pc)
- MC150 Mounting Clamps for Rigid 6" Duct (2pc)
- MC200 Mounting Clamps for Rigid 8" Duct (2pc)
- MC250 Mounting Clamps for Rigid 10" Duct (2pc)
- MC300 Mounting Clamps for Rigid 12" Duct (2pc)
- MC355 Mounting Clamps for Rigid 14" Duct (2pc)



Gear Clamps for Flexible Duct

GC stainless steel gear clamps are an easy and effective way to connect an in-line duct fan to flexible insulated duct and other auxiliary pieces.

- GC150 Gear Clamp for 4" - 6" Duct, Stainless Steel
- GC200 Gear Clamp for 5.5" - 8.5" Duct, Stainless Steel



Flexible Insulated Duct

FL models are UL-181 Class 1 air duct, wrapped with R4.2 insulation. FLM models are UL-181 and ULCS-110 M Class air duct, wrapped with 2-ply black polyester laminated inner core.

- FL100 Flexible Insulated 4" Duct - 12.5' Length
- FL100-25 Flexible Insulated 4" Duct - 25' Length
- FL125 Flexible Insulated 5" Duct - 25' Length
- FL150 Flexible Insulated 6" Duct - 25' Length
- FL200 Flexible Insulated 8" Duct - 25' Length
- FL250 Flexible Insulated 10" Duct - 25' Length
- FL300 Flexible Insulated 12" Duct - 25' Length
- FLM100 Flexible Insulated 4" Duct - 10' Length
- FLM100-25 Flexible Insulated 4" Duct - 25' Length
- FLM125 Flexible Insulated 5" Duct - 25' Length
- FLM150 Flexible Insulated 6" Duct - 25' Length
- FLM200 Flexible Insulated 8" Duct - 25' Length
- FLM250 Flexible Insulated 10" Duct - 25' Length
- FLM300 Flexible Insulated 12" Duct - 25' Length



Wye Fittings

WYE fittings provide an airtight branch fitting. The crimp and bead edging ensures an easy connection. Available in 28 Ga.

- WYE-04 Y-Fitting, 4"x4"x4" Duct
- WYE-06 Y-Fitting, 6"x6"x6" Duct
- WYE-08 Y-Fitting, 8"x8"x8" Duct

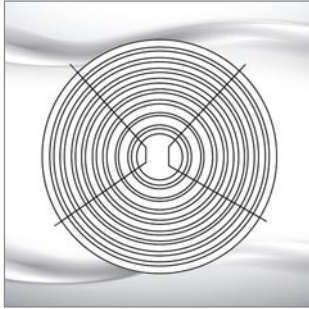


Louvered Shutters (with Tail Piece)

LS louvered shutters are designed as plastic molded vent hoods. The weather resistant louvered construction prevents wind and rain from entering the vent.

- LS100-4W Louvered Shutter, 4" Duct
- LS150-6W Louvered Shutter, 6" Duct

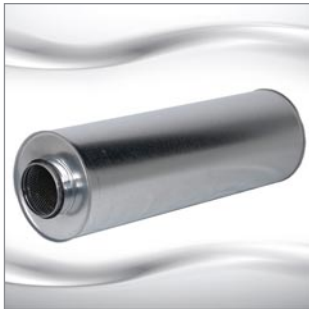
Fan Accessories



Guards

PG guards are used in various applications. Utilize a PG guard as a grille, or mount it directly on the outlet/inlet of a fan to allow for a safe installation.

- PG100 Guard, 4" Duct
- PG125 Guard, 5" Duct
- PG150 Guard, 6" Duct
- PG200 Guard, 8" Duct
- PG250 Guard, 10" Duct
- PG300 Guard, 12" Duct



Sound Attenuators

SA sound attenuators are designed to reduce fan noise traveling along ventilation ducts. They may be used in either supply or exhaust ducts.

- SA100 Sound Attenuator, 4" Duct
- SA150 Sound Attenuator, 6" Duct
- SA200 Sound Attenuator, 8" Duct
- SA250 Sound Attenuator, 10" Duct
- SA300 Sound Attenuator, 12.4" Duct
- SA400 Sound Attenuator, 16" Duct



Duct Reducers/Increases

DRI duct reducers/increasers are used to transition a duct from a larger or smaller size. Available in 28 Ga.

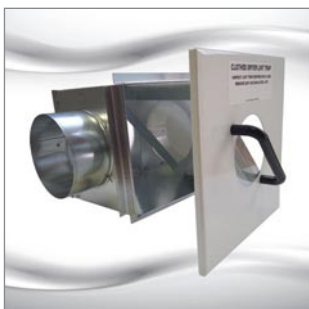
- DRI-04-03 Duct Reducer/Incraser, 4" - 3" Duct, Plastic
- DRI-06-04 Duct Reducer/Incraser, 6" - 4" Duct, Galvanized
- DRI-08-06 Duct Reducer/Incraser, 8" - 6" Duct, Galvanized
- DRI-10-08 Duct Reducer/Incraser, 10" - 8" Duct, Galvanized
- DRI-12-10 Duct Reducer/Incraser, 12" - 10" Duct, Galvanized
- DRI-14-12 Duct Reducer/Incraser, 14" - 12" Duct, Galvanized



Roof & Wall Caps

Black plastic roof caps include damper, screen, and collar. Aluminum wall caps include spring controlled damper.

- RC100 Roof Cap, 4" Duct, Black Plastic
- RC150 Roof Cap, 6" Duct, Black Plastic
- RC200 Roof Cap, 8" Duct, Black Plastic
- WC100 Wall Cap, 4" Duct, Aluminum, Reducer 4" - 3"
- WC150 Wall Cap, 6" Duct, Aluminum
- WC200 Wall Cap, 8" Duct, Aluminum



Lint Trap

LT100 lint traps offer a simple solution for reducing maintenance associated with dryer vents. The one-piece door with screen slides easily into place, without having to fuss with flimsy springs or clips. Its versatile design allows for either wall or ceiling mount installation.

- LT100 Lint Trap for Dryer, 4" Duct

DAMPERS

BDD BACKDRAFT DAMPERS



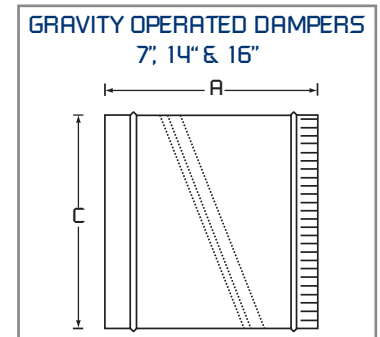
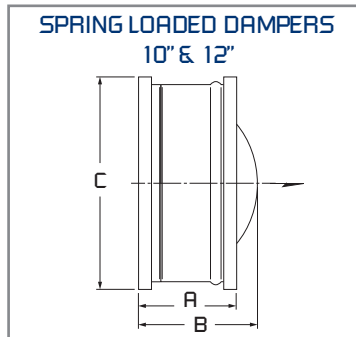
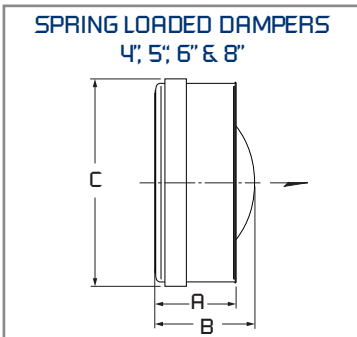
Spring Loaded Dampers

- Neoprene damper seal to minimize air leakage
- Steel housing, aluminum butterfly damper blades
- Gasket designed to withstand temperatures from -22 F to 180 F
- Requires from 0.04 to 0.08 in. wg pressure to open
- Simple installation in any position - entire assembly inserts into duct
- Exterior foam gasket assures a tight seal against duct
- 4", 5", 6" & 8" sizes include stamped metal sleeve with center pin / post designs
- 10" & 12" sizes include rolled metal sleeve with center post design



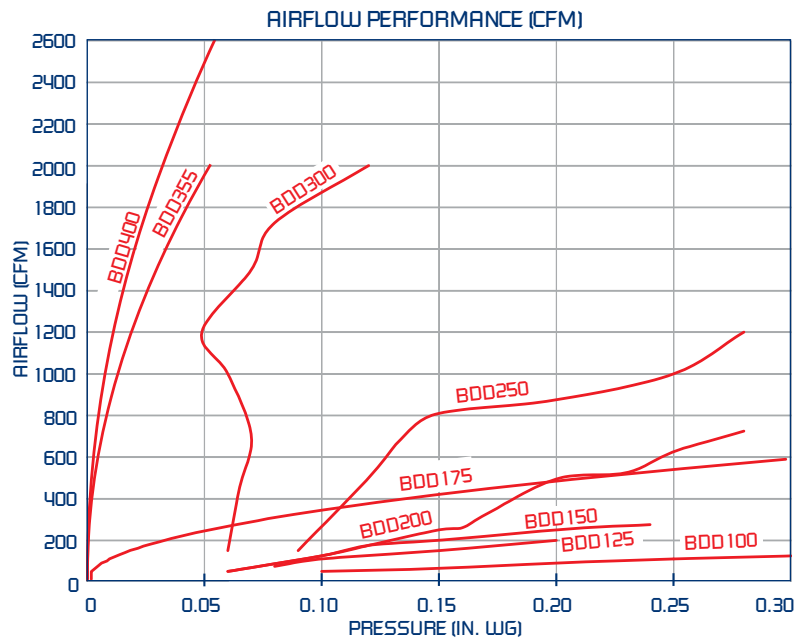
Gravity Operated Dampers

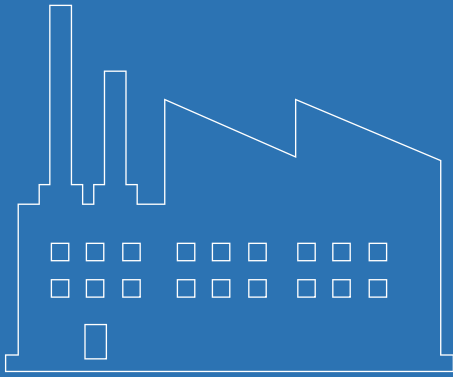
- Low air leakage design
- Galvanized steel housing, aluminum butterfly damper blades
- Gravity operated closure
- Install in horizontal or vertical (upblast only) position
- Suitable for supply or exhaust applications
- Available in 7", 14" & 16" sizes



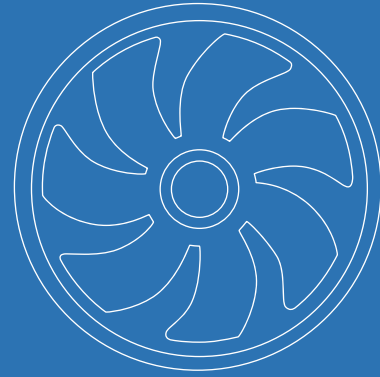
MODEL	DIMENSIONS IN INCHES*			Gauge
	A	B	C (Nominal)	
SPRING LOADED DAMPERS				
BDD100	1.8	2.0	4	20
BDD125	2.0	2.5	5	20
BDD150	2.5	3.0	6	20
BDD200	2.8	3.8	8	20
BDD250	4.8	6.0	10	20
BDD300	6.3	6.8	12	20
GRAVITY OPERATED DAMPERS				
BDD175	7.0	-	7	28
BDD355	12.0	-	14	24
BDD400	14.0	-	16	22

*DO NOT USE FOR CONSTRUCTION
CONSULT FACTORY FOR CERTIFIED PRINTS





***Industrial Fans
& Blowers***



***OEM Solutions
& Custom Fans***



***Commercial Fans
& Dampers***



***Residential Fans &
Air Purifiers***



Residential Fans & Air Purifiers

Continental Fan Manufacturing Inc.
203 Eggert Road
Buffalo, New York 14215

Continental Fan Canada Inc.
12-205 Matheson Blvd E
Mississauga, Ontario L4Z 3E3

Continental Fan Manufacturing Inc.
6274 Executive Blvd.
Dayton, Ohio 45424

1-800-779-4021 • www.continentalfan.com

Distributed by:

Residential-CAT-1706