



CFMTM
CONTINENTAL FAN

*better AIRFLOW by DESIGN*TM

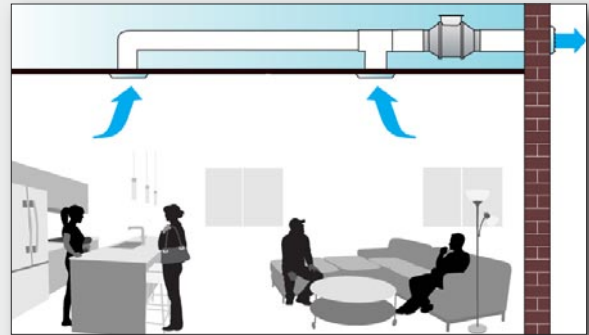
Residential Fans & Air Purifiers



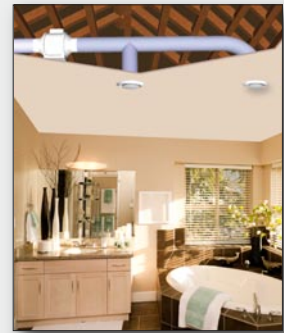
HOME VENTILATION SOLUTIONS

There are many locations in a home where air movement may be necessary:

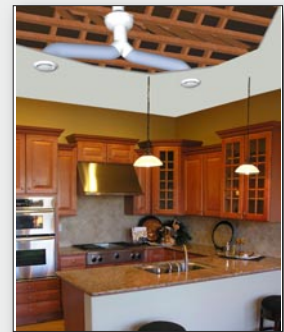
Duct Boosting



Bathroom Exhaust



Kitchen Exhaust



Additional Applications

- Dryer boosting
- Garage ventilation
- Attic ventilation
- Whole house ventilation
- Crawl space ventilation
- General kitchen exhaust
- Basement kitchens, washrooms
- Apartments/townhouses
- Indoor pool ventilation



How to size a Range Hood Exhaust Fan

The following recommendations follow minimum guidelines published by the Home Ventilating Institute (HVI):

Wall Mounted Range Hood:

- 100 cfm per foot of hood width (36" range would require a minimum 300 cfm)

Island Style Range Hood:

- 150 cfm per foot of hood width (36" range would require a minimum 450 cfm)

Note: Local building codes, as well as any recommendations provided by the range and range hood manufacturers, should be consulted before making a fan selection.

RANGE HOOD EXHAUST

HOW WELL DOES YOUR RESIDENTIAL RANGE HOOD EXHAUST PERFORM?

Whether one is an active parent on the go, or a gourmet chef moonlighting at a day job, the kitchen is the heart of a home. The household congregates there for breakfast, reviews daily activities, and enjoys family dinners. All too often, kitchens can be marred by smoke and odors due to an inefficient range hood.

In-line duct fans are a simple solution for an inefficient residential range hood. In-line duct fans can be used as a principle exhaust fan or as a booster fan to improve the efficiency of an existing residential range hood. These fans may be speed controlled with an independent speed controller, or by tying into an existing range hood controller.

AXC in-line duct fans and EXT external mount duct fans are ideal for range hood exhaust.

WHAT IF A RANGEHOOD ISN'T AN OPTION?

Not every home or remodel is suited for a rangehood to ventilate the kitchen. Homeowners can still evacuate the smoke and odor produced from cooking, with the same quiet and efficient exhaust fans used in rangehood ventilation. Continental Fan recommends using ceiling grilles combined with an AXC in-line duct fan or EXT external mount fan and a variable speed control. Ceiling grilles can be installed directly over the area you want to target, so when in use the fumes will not linger around the house.

FAN OPTIONS & ACCESSORIES



AXC IN-LINE DUCT FANS

AXC In-Line Duct Fans are designed for residential, commercial and industrial ventilation applications. The quiet and efficient backward-curved impeller is capable of developing significant pressure, and the in-line configuration simplifies installation, saving time and money!



Design Features

- Heavy gauge, drawn steel housing with baked epoxy finish
- 120V operation, other voltages available
- Easy to install - mounting brackets included
- May be mounted in any position
- Fans may be used to supply or exhaust air
- Suitable for air temperatures up to 140 F / 60 C
- Energy efficient - speed controllable (optional solid state speed control)
- Optional pre-wired with 120V power cord (AXC-C)
- Exceptionally quiet and efficient BC centrifugal motorized impeller
- External rotor motor design results in superior motor cooling and durability
- Permanently lubricated ball bearing motor for maintenance-free operation
- Automatic reset thermal overload protection
- Fan and motor are precision balanced for quiet and vibration-free operation
- Easily accessible, external junction box with pre-wired capacitor
- Available to fit duct sizes 4" - 14"; airflow capacities to 1,400 cfm



FAN OPTIONS

Accessories

Pages 22-23

Controls

Pages 20-21

Grilles

Page 19

MODEL	WATTS	RPM	AIRFLOW PERFORMANCE (CFM)												
			0" SP	0.2" SP	0.4" SP	0.6" SP	0.8" SP	1.0" SP	1.2" SP	1.5" SP	2.0" SP	3.0" SP			
AXC100A-ES	43.3	2580	147	130	107	82	57	34	11						
AXC100B	83.4	2620	150	140	127	112	94	74	53	23					
AXC125A-ES	44.4	2520	179	150	121	87	49	14							
AXC125B	85.4	2750	183	160	141	122	101	77	51	14					
AXC150A-ES	46.8	2390	235	190	148	97	44								
AXC150B-ES	89.2	2450	308	260	216	175	139	108	81	47					
AXC200A-ES	84.5	2500	368	300	234	184	149	114	70						
AXC200B-ES	188	2550	579	520	453	387	329	282	245	206	154				
AXC250-ES	197	2470	616	550	488	431	379	330	286	227	143				
AXC300A-ES	206	2450	780	700	595	420	330	290	255	210	132				
AXC300B-ES	312	2780	970	910	803	680	559	453	367	273	164				
AXC355A	334	1360	1325	1150	960	790	660	550	430	238					
AXC355B	830	2900	1400	1370	1325	1250	1210	1135	1090	1000	880	675			

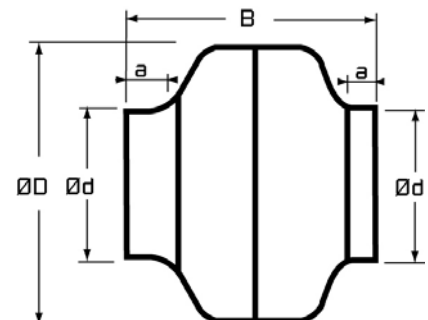
FOR PRE-WIRED WITH 120V POWER CORD, ADD -C TO MODEL.

MODEL	DIMENSIONS IN INCHES*				
	D	d	a	B	SHIP WT (LBS)
AXC100A-ES	9.5	3.9	1.0	8.3	6.5
AXC100B	9.5	3.9	1.0	8.3	6.5
AXC125A-ES	9.5	4.8	1.0	8.3	6.5
AXC125B	9.5	4.8	1.0	8.3	6.5
AXC150A-ES	9.5	5.8	1.0	8.3	6.5
AXC150B-ES	13.2	5.8	1.0	9.1	11.0
AXC200A-ES	13.2	7.8	1.0	9.1	11.0
AXC200B-ES	13.2	7.8	1.0	9.1	11.0
AXC250-ES	13.2	9.8	1.0	9.1	11.0
AXC300A-ES	15.9	11.8	1.2	11.8	18.0
AXC300B-ES	15.9	11.8	1.2	11.8	20.0
AXC355A	19.0	14.0	1.5	15.7	26.0
AXC355B	19.0	14.0	1.5	15.7	31.0

*DO NOT USE FOR CONSTRUCTION
CONSULT FACTORY FOR CERTIFIED PRINTS

AXC models 100A through 300B are cULus listed
AXC models 355A and 355B are CSA listed to both US and Canadian standards

Products are HVI certified for airflow and power at 0.2" SP. HVI currently does not have a standard in place for testing the sound of a remote mounted fan. Many factors, such as ducting and fan location, can contribute to sound levels. Generally, a remote mounted fan should be quieter than a typical ceiling mounted fan.



EXT EXTERNAL MOUNT DUCT FANS

EXT External Mount Duct Fans offer the perfect solution when space restrictions prevent the use of in-line duct fans. EXT fans provide a simple through-the-wall solution, and can be mounted on the exterior of a building to allow for easy access to the fan. EXT fans utilize quiet and energy efficient backward-curved centrifugal impellers.



Design Features

- Heavy gauge, galvanized steel housing with baked epoxy finish
- 120V operation
- May be mounted on the exterior of a building
- Enclosed motor housing for dust & lint
- Suitable for air temperatures up to 140 F / 60 C
- Energy efficient - speed controllable (optional solid state speed control)
- Rugged construction for long life
- Built-in backdraft damper
- Exceptionally quiet and efficient BC centrifugal motorized impeller
- External rotor motor design results in superior motor cooling and durability
- Permanently lubricated ball bearing motor for maintenance-free operation
- Automatic reset thermal overload protection
- Fan and motor are precision balanced for quiet and vibration-free operation
- Pre-wired capacitor
- Available to fit duct sizes in 4", 6", & 8"; airflow capacities to 445 cfm



FAN OPTIONS

Accessories

Pages 22-23

Controls

Pages 20-21

Grilles

Page 19

AIRFLOW PERFORMANCE (CFM)

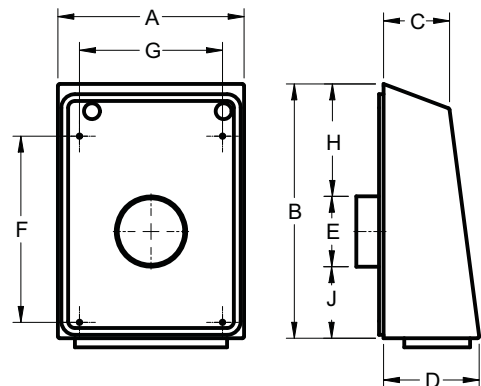
MODEL	WATTS	RPM	0" SP	0.1" SP	0.3" SP	0.4" SP	0.5" SP	0.8" SP	1.0" SP	1.3" SP	1.5" SP	2.0" SP
EXT100A	66	1560	118	101	84	72	62	44	28	16		
EXT100B	81	2260	177	163	150	140	125	100	72	47	26	
EXT150A	90	2436	227	202	186	174	162	130	85	21		
EXT150B	140	2830	396	373	350	326	311	268	232	190	149	66
EXT200A	140	2820	445	393	358	328	300	254	212	170	119	
EXT200B	186	2310	420	379	353	329	298	249	211	172	142	

DIMENSIONS IN INCHES*

MODEL	A	B	C	D	E	F	G	H	J	SHIP WT (LBS)
EXT100A	10.2	14.0	3.6	5.2	3.8	10.3	7.9	6.2	3.8	11.6
EXT100B	10.2	14.0	3.6	5.2	3.8	10.3	7.9	6.2	3.8	11.6
EXT150A	10.2	14.0	3.6	5.2	5.8	10.3	7.9	5.2	2.8	11.6
EXT150B	14.2	17.3	3.6	5.2	5.8	12.3	11.6	7.2	4.2	18.0
EXT200A	14.2	17.3	3.6	5.2	7.8	12.3	11.6	6.3	3.2	18.0
EXT200B	14.2	17.3	3.6	5.2	7.8	12.3	11.6	6.3	3.2	19.0

*DO NOT USE FOR CONSTRUCTION

CONSULT FACTORY FOR CERTIFIED PRINTS



SUPPLY & EXHAUST GRILLES

Enhance your bathroom décor with Continental Fan's attractive ventilation grilles. These sleek and attractive grilles compliment any bathroom interior and maximize your fan's performance.



Adjustable Ventilation Grilles

GR adjustable ventilation grilles are designed for ceiling or wall applications. The fully adjustable ventilation grilles are easy to install and adjust. GR grilles are ideal for use with in-line fans.

- ❑ GR100 Adjustable Grille 4", Collar
- ❑ GR150 Adjustable Grille 6", Collar
- ❑ GR200 Adjustable Grille 8", Collar
- ❑ GR100-6PK Adjustable Grille 4", Collar - 6 pcs
- ❑ GR150-6PK Adjustable Grille 6", Collar - 6 pcs



AeroGrille Ventilation Grilles

AeroGrilles feature quality construction and allow for whisper quiet airflow. Designed for use with either in-line or external mount duct fans, they fit a standard 6" duct.

- ❑ AG150 AeroGrille 6"
- ❑ AG150-C AeroGrille 6", Collar
- ❑ AG150-CD AeroGrille 6", Collar, Damper



Retro Ventilation Grilles

Square or round retro supply and exhaust grilles are ideal for use with in-line duct fans.

- ❑ RTR678 Round Grille, 6"-7"-8", Stepped Collar
- ❑ RTS678 Square Grille, 6"-7"-8", Stepped Collar



Decorative Ventilation Grilles

These attractive grilles are designed for use with non-lighted versions of AeroFan bathroom fans.

- ❑ TGRRD90 Grille TBF90, Round Silver/Chrome
- ❑ TGRRD120 Grille TBF120, Round Silver/Chrome
- ❑ TGRSQ90 Grille TBF90, Square Silver/Chrome
- ❑ TGRSQ120 Grille TBF120, Square Silver/Chrome
- ❑ TGRCH90 Grille TBF90, Rectangular Silver/Chrome
- ❑ TGRCH120 Grille TBF120, Rectangular Silver/Chrome

Fan Controls



Variable Speed Controls (Solid State)

VSC3 and VSC9 variable speed controls are designed for AC motors.

- VSC3 Variable Speed Control - 3 amp - 3 Wire
- VSC9 Variable Speed Control - 9 amp - 3 Wire



Digital Timers

Time control auto shut off, in preset intervals, allows for proper ventilation and energy savings. The red LED indication light remains lit until the unit shuts off.

- DT60 Digital Timer 10 - 20 - 30 - 60 Minutes



Spring Wound Timer

Spring wound timer provides energy savings by limiting the "on-time" of the fan, up to 60 minutes. CT timers are easily installed in a standard electrical box. Cover plate not included.

- CT100V Spring Wound Timer 0 - 1 Hour



On/Off Switch (w/Pilot Light)

The neon light is ON when the switch is in the ON position. 15Amp, 120V Single Pole/ AC Switch. Cover plate not included.

- PLS120V ON/OFF Switch w/Pilot Light



Thermostat

The TST120V thermostat is suitable for direct connection with any resistance heating element or unit heater.

- TST120V Line Voltage Thermostat, 120V



Dehumidistat (for Humidity Control)

Wall mounted DHS dehumidistat allows for "problem" areas to be targeted for ventilation. Regulates relative humidity from 20% to 80% RH (8% RH Maximum Differential).

- DHS120V Dehumidistat



Current Sensor (Solid State)

The CS120VAF current sensor provides a compact, low cost method of detecting AC current. It is ideal for ON/OFF sensing of remote equipment.

- CS120AF Current Sensor, 120V, Solid State



Pressure Switch (with Time Delay)

Designed for HVAC or Energy Management applications, PST120V pressure switch is an airflow proving switch with an electronic cycle timing board.

- PST120V Pressure Switch w/Time Delay



Auto Transformer

TF auto transformer allows for voltage to be regulated to 60V & 90V increments. Channel frame mounting and metal end shells make for a simple installation.

- TF120V Auto Transformer - 90/60V

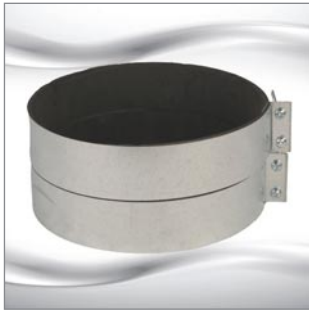
Fan Accessories



Flexible Insulated Duct

UL listed 181 class 1 air duct, wrapped with R4.2 insulation and black polyethylene cover. Ideal for long run applications for HVAC, bathroom and general venting applications.

- FL100 Flexible Insulated 4" Duct - 12.5' Length
- FL100-25 Flexible Insulated 4" Duct - 25' Length
- FL125 Flexible Insulated 5" Duct - 25' Length
- FL150 Flexible Insulated 6" Duct - 25' Length
- FL200 Flexible Insulated 8" Duct - 25' Length
- FL250 Flexible Insulated 10" Duct - 25' Length
- FL300 Flexible Insulated 12" Duct - 25' Length



Mounting Clamps for Rigid Duct

MC mounting clamps are designed for use with rigid duct. The foam neoprene layer creates an air tight and solid installation for in-line duct fans.

- MC100 Mounting Clamps for Rigid 4" Duct (2pc)
- MC125 Mounting Clamps for Rigid 5" Duct (2pc)
- MC150 Mounting Clamps for Rigid 6" Duct (2pc)
- MC200 Mounting Clamps for Rigid 8" Duct (2pc)
- MC250 Mounting Clamps for Rigid 10" Duct (2pc)
- MC300 Mounting Clamps for Rigid 12" Duct (2pc)
- MC355 Mounting Clamps for Rigid 14" Duct (2pc)



Gear Clamps for Flexible Duct

GC stainless steel gear clamps are an easy and effective way to connect an in-line duct fan to flexible insulated duct and other auxiliary pieces.

- GC150 Gear Clamp for 4" - 6" Duct, Stainless Steel
- GC200 Gear Clamp for 5.5" - 8.5" Duct, Stainless Steel



Duct Reducers/Increases

DRI duct reducers/increasers are used to transition a duct from a larger or smaller size. Available in 28 Ga.

- DRI-04-03 Duct Reducer/Incraser, 4" - 3" Duct, Plastic
- DRI-06-04 Duct Reducer/Incraser, 6" - 4" Duct, Galvanized
- DRI-08-06 Duct Reducer/Incraser, 8" - 6" Duct, Galvanized
- DRI-10-08 Duct Reducer/Incraser, 10" - 8" Duct, Galvanized
- DRI-12-10 Duct Reducer/Incraser, 12" - 10" Duct, Galvanized
- DRI-14-12 Duct Reducer/Incraser, 14" - 12" Duct, Galvanized

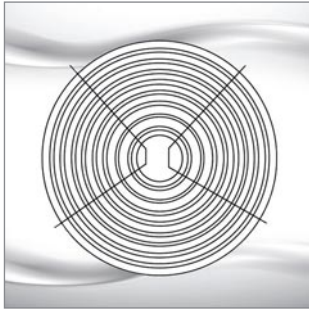


Wye Fittings

WYE fittings provide an airtight branch fitting. The crimp and bead edging ensures an easy connection. Available in 28 Ga.

- WYE-04 Y-Fitting, 4"x4"x4" Duct
- WYE-06 Y-Fitting, 6"x6"x6" Duct
- WYE-08 Y-Fitting, 8"x8"x8" Duct

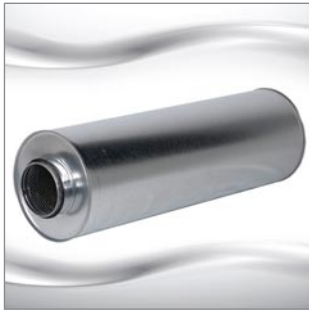
Fan Accessories



Guards

PG guards are used in various applications. Utilize a PG guard as a grille, or mount it directly on the outlet/inlet of a fan to allow for a safe installation.

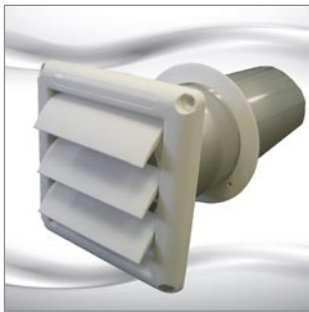
- PG100 Guard, 4" Duct
- PG125 Guard, 5" Duct
- PG150 Guard, 6" Duct
- PG200 Guard, 8" Duct
- PG250 Guard, 10" Duct
- PG300 Guard, 12" Duct



Sound Attenuators

SA sound attenuators are designed to reduce fan noise traveling along ventilation ducts. They may be used in either supply or exhaust ducts.

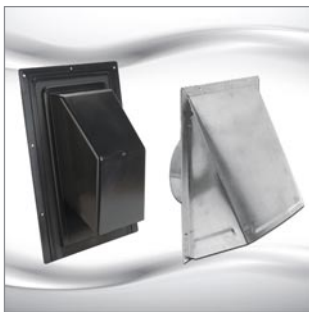
- SA100 Sound Attenuator, 4" Duct
- SA150 Sound Attenuator, 6" Duct
- SA200 Sound Attenuator, 8" Duct
- SA250 Sound Attenuator, 10" Duct
- SA300 Sound Attenuator, 12.4" Duct
- SA400 Sound Attenuator, 16" Duct



Louvered Shutters (with Tail Piece)

LS louvered shutters are designed as plastic molded vent hoods. The weather resistant louvered construction prevents wind and rain from entering the vent.

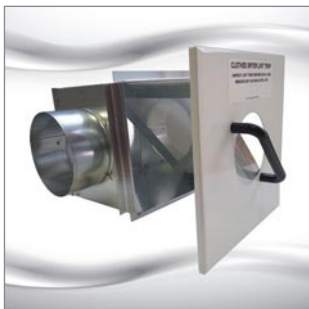
- LS100-4W Louvered Shutter, 4" Duct
- LS150-6W Louvered Shutter, 6" Duct



Roof & Wall Caps

Black plastic roof caps include damper, screen, and collar. Aluminum wall caps include spring controlled damper.

- RC100 Roof Cap, 4" Duct, Black Plastic
- RC150 Roof Cap, 6" Duct, Black Plastic
- RC200 Roof Cap, 8" Duct, Black Plastic
- WC100 Wall Cap, 4" Duct, Aluminum, Reducer 4" - 3"
- WC150 Wall Cap, 6" Duct, Aluminum
- WC200 Wall Cap, 8" Duct, Aluminum



Lint Trap

LT100 lint traps offer a simple solution for reducing maintenance associated with dryer vents. The one-piece door with screen slides easily into place, without having to fuss with flimsy springs or clips. Its versatile design allows for either wall or ceiling mount installation.

- LT100 Lint Trap for Dryer, 4" Duct

DAMPERS

BDD BACKDRAFT DAMPERS



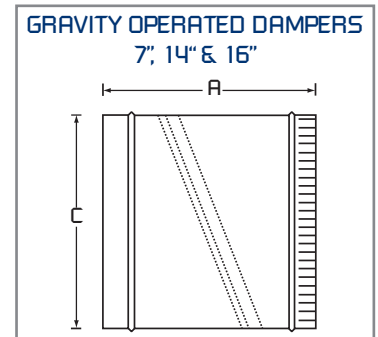
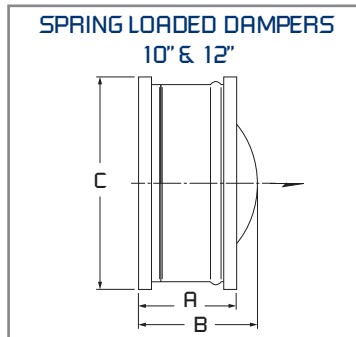
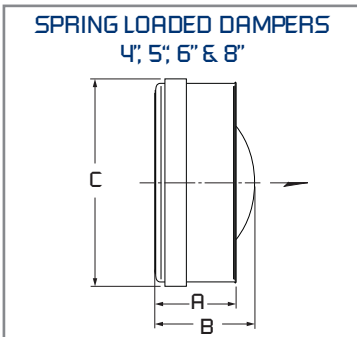
Spring Loaded Dampers

- Neoprene damper seal to minimize air leakage
- Steel housing, aluminum butterfly damper blades
- Gasket designed to withstand temperatures from -22 F to 180 F
- Requires from 0.04 to 0.08 in. wg pressure to open
- Simple installation in any position - entire assembly inserts into duct
- Exterior foam gasket assures a tight seal against duct
- 4", 5", 6" & 8" sizes include stamped metal sleeve with center pin / post designs
- 10" & 12" sizes include rolled metal sleeve with center post design



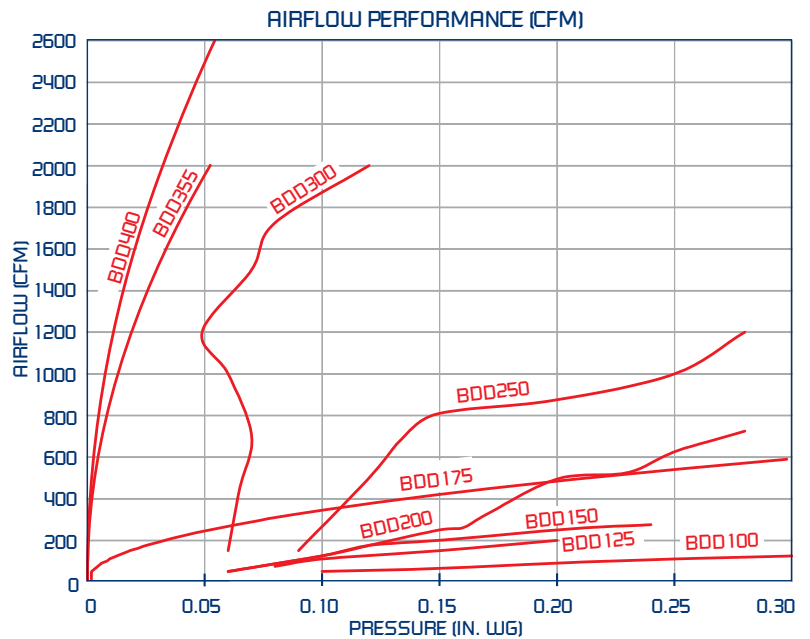
Gravity Operated Dampers

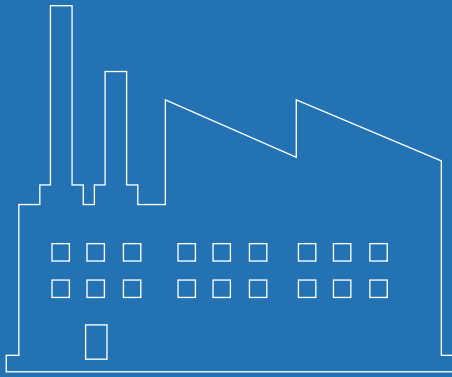
- Low air leakage design
- Galvanized steel housing, aluminum butterfly damper blades
- Gravity operated closure
- Install in horizontal or vertical (upblast only) position
- Suitable for supply or exhaust applications
- Available in 7", 14" & 16" sizes



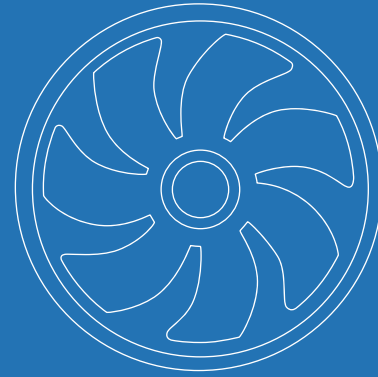
MODEL	DIMENSIONS IN INCHES*			Gauge
	A	B	C (Nominal)	
SPRING LOADED DAMPERS				
BDD100	1.8	2.0	4	20
BDD125	2.0	2.5	5	20
BDD150	2.5	3.0	6	20
BDD200	2.8	3.8	8	20
BDD250	4.8	6.0	10	20
BDD300	6.3	6.8	12	20
GRAVITY OPERATED DAMPERS				
BDD175	7.0	-	7	28
BDD355	12.0	-	14	24
BDD400	14.0	-	16	22

*DO NOT USE FOR CONSTRUCTION
CONSULT FACTORY FOR CERTIFIED PRINTS





***Industrial Fans
& Blowers***



***OEM Solutions
& Custom Fans***



***Commercial Fans
& Dampers***



***Residential Fans &
Air Purifiers***



Residential Fans & Air Purifiers

Continental Fan Manufacturing Inc.
203 Eggert Road
Buffalo, New York 14215

Continental Fan Canada Inc.
12-205 Matheson Blvd E
Mississauga, Ontario L4Z 3E3

Continental Fan Manufacturing Inc.
6274 Executive Blvd.
Dayton, Ohio 45424

1-800-779-4021 • www.continentalfan.com

Distributed by:

Residential 15.10