

DSF DESTRATIFICATION FANS

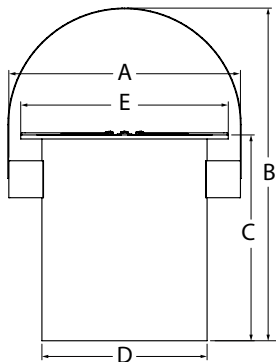


DSF Destratification Fans force heated or cooled air down to floor level, eliminate temperature layers in the ceiling space, and create a more comfortable environment inside a building. The net result is energy savings, along with maximizing the efficiency of an HVAC system.

Features & Benefits

- Reduce hot and cold spots through the mixing of air in large spaces
- Lower energy costs, increased comfort
- Ideal for any building with ceilings 15' or higher
- Breaks up stratification layers
- Powerful, axial flow fan
- External rotor motor design results in superior motor cooling and durability
- Speed controllable using optional solid state speed control
- Permanently lubricated ball bearing motors for maintenance-free operation
- Automatic reset, thermal overload protection
- 120V, 60 Hz operation
- Steel housing with corrosion resistant finish
- Gripple fasteners supplied for safe mounting
- Rotating mounting bracket permits mounting at any angle
- Maximum permissible ambient temperature: 140 F
- Capacities up to 1,460 cfm
- Available in 10", 12" & 14" fan sizes

See Destratification Fan Application Guide for more information



How Do I Determine How Many Fans I Need?

Air circulation should occur once or twice per hour to maintain a healthy building environment.

Select the fan cfm based on the following ceiling height recommendations:

- 15 ft - 20 ft use 420 cfm fan or model DSF250
- 20 ft - 25 ft use 1055 cfm fan or model DSF300
- 25 ft - up use 1460 cfm fan or model DSF350

To determine the number of DSF fans for a given area, the following information is required:

- (L x W x H) = Size of room
- Size of room / cfm / 60 = Number of units

Example: a building is 125 ft long, 75 ft wide, and 20 ft high.

- 125 x 75 x 20 = 187,500 cu. ft
- 187,500 cu. ft / 1055 cfm (DSF300 Fan) / 60 = 3 DSF Fans (round to the nearest whole number)

DIMENSIONS IN INCHES*

MODEL	A	B	C	D	E
DSF250	15.2	20.2	15.2	10.2	13.4
DSF300	17.3	23.9	17.9	12.2	15.4
DSF350	19.2	27.3	20.3	14.2	17.4

*DO NOT USE FOR CONSTRUCTION

FAN PERFORMANCE

MAX WATTS	MAX AMPS	RPM	CFM 0" SP	AIR VELOCITY DEPENDING ON DISTANCE FROM DSF FAN, FPM											
				3ft	6ft	10ft	13ft	15ft	20ft	23ft	25ft	30ft	33ft	35ft	
60	0.51	1700	420	378	270	220	156	90	60	20	-	-	-	-	
94	0.80	1675	1055	918	594	380	234	162	120	79	38	20	-	-	
162	1.38	1685	1460	1100	756	760	468	324	300	217	169	120	59	19	

CONSULT FACTORY FOR CERTIFIED PRINTS

CMX & DSF Fan Applications

Commercial

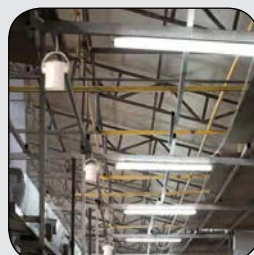
- Gymnasiums
- Showrooms
- Big box stores
- Schools

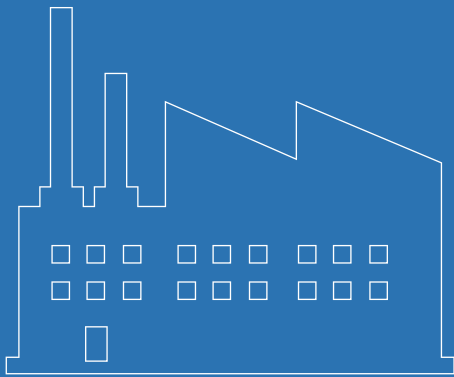
Industrial

- Warehouses
- Cold storage
- Distribution centers
- Airport hangars

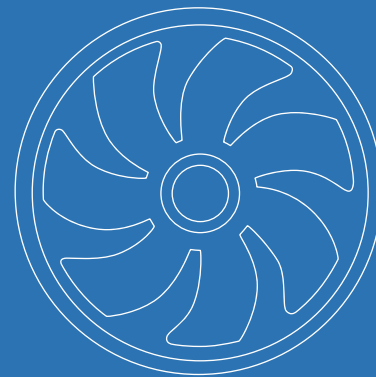
Agriculture

- Dairy barns
- Greenhouses
- Horse stables
- Produce farms





***Industrial Fans
& Blowers***



***OEM Solutions
& Custom Fans***



***Commercial Fans
& Dampers***



***Residential Fans &
Air Purifiers***



Wholesale Ventilation Products

Continental Fan Manufacturing Inc.
Buffalo, NY ~ Dayton, OH

Continental Fan Canada Inc.
Mississauga, ON

www.continentalfan.com
1-800-779-4021

Distributed by:

