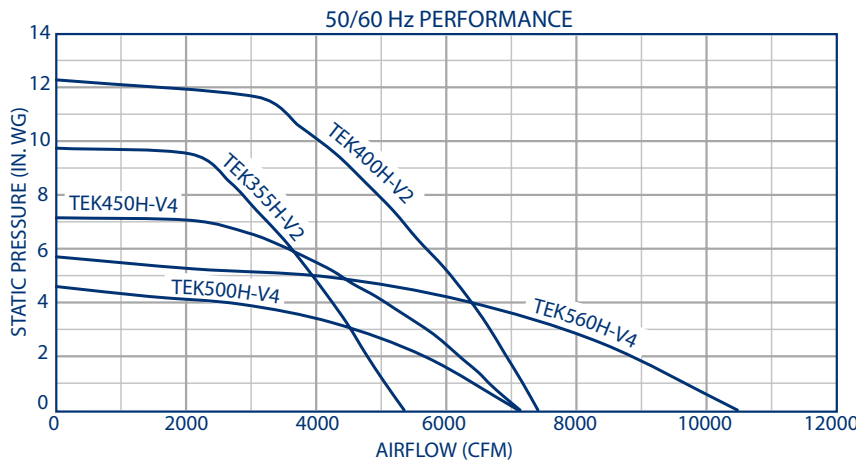
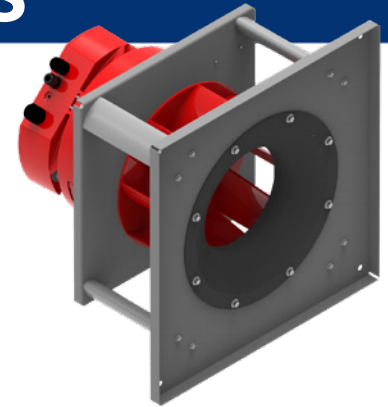


TEK-ECM PLUG FANS

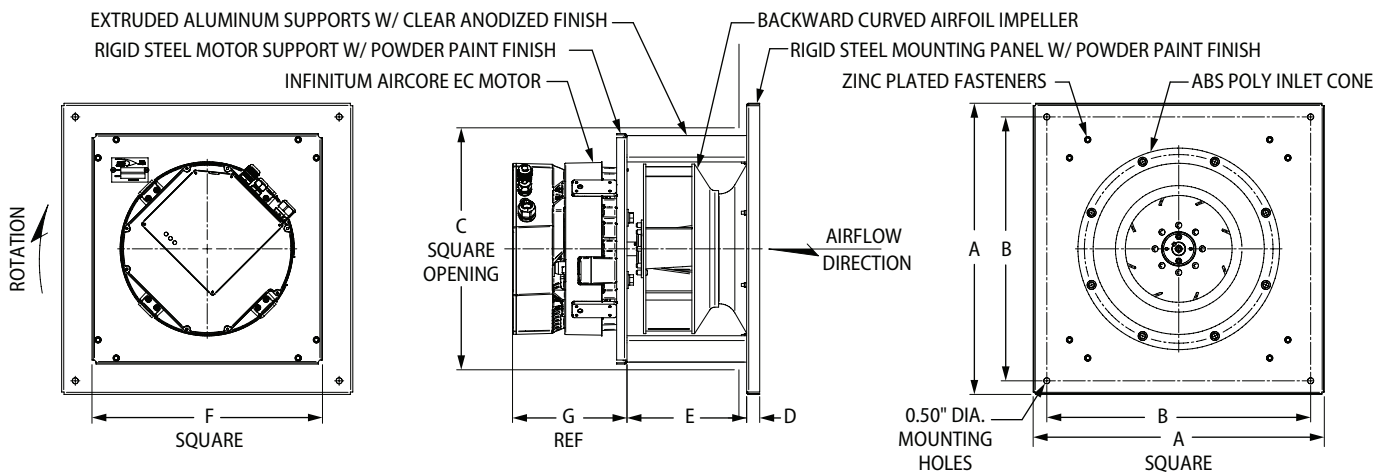
FEATURES & BENEFITS

- High efficiency, backward curved airfoil impeller
- Injection molded GRP polyamide TEK impeller
- Modular construction, compact design
- OEM custom configurations available
- Horizontal and vertical installation
- Non-overloading power characteristics
- Infinitem Aircore EC Motor with integrated VFD
- More efficient than NEMA Super Premium / IE4 motors plus VFD
- Built in electronic thermal protection
- Max 50°C operation (above 40 degrees, derate 2% per 1 degree C)
- Control by Modbus, BACnet, 0-10VDC, 4-20mA



MOTOR CHART		
MODEL	RPM	MTR HP
TEK355H-V2-ECM	3600	5
TEK400H-V2-ECM	3600	7 ½
TEK450H-V4-ECM	2400	7 ½
TEK500H-V4-ECM*	1800	5
TEK560H-V4-ECM*	1800	7 ½

*CCW ROTATION ONLY FOR MODELS
TEK500H-V4-ECM & TEK560H-V4-ECM



MODEL	DIMENSIONS IN INCHES*						
	A	B	C	D	E	F	G
TEK355H- V2-ECM	24.0	21.8	19.5	1.1	9.5	19.0	9.5
TEK400H-V2-ECM	28.0	25.8	20.5	1.1	10.5	20.0	9.5
TEK450H-V4-ECM	28.0	25.8	24.0	1.1	11.7	23.6	9.5
TEK500H-V4-ECM				Consult Factory			
TEK560H-V4-ECM				Consult Factory			

*DO NOT USE FOR CONSTRUCTION

CONSULT FACTORY FOR CERTIFIED PRINTS

TEK-ECM_Plug-FL-2501