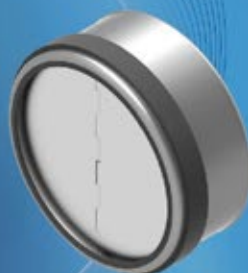





Wholesale Ventilation Products



better AIRFLOW by DESIGN™

Continental Fan was established in 1986 to manufacture and distribute quality ventilation equipment. Our objectives then were simple ... to provide superior products, dependable service, competitive pricing, and a knowledgeable staff to satisfy our customers' needs. They remain unchanged today.

Industry leading  air moving equipment has earned an excellent reputation through years of exceptional performance and reliable operation. We offer the largest quick ship program available and fast deliveries for those products not in stock.

Our experienced and friendly staff delivers customer service that is second to none. We are happy to entertain inquiries for custom fans and provide our customers with 3D models for their air moving solutions. In short, we provide ... **better AIRFLOW by DESIGN™**

TABLE OF CONTENTS

ENERGY RECOVERY VENTILATORS

- ECO-FLO^{Plus} Energy Recovery Ventilator (ERV) 3

DUCT FANS

- AXC In-Line Duct Fans 4
- AXS EC In-Line Duct Fans 5
- AXP In-Line Duct Fans 6
- MFT & MFT-S Mixed Flow In-Line Fans 7
- MBI Centrifugal In-Line Fans 8
- EXM External Mount Duct Fans 9

RADON FANS

- ARI-C Radon Fans 10

DRYER BOOSTER FANS

- DVK Dryer Booster Fan 11

BATHROOM FANS & KITS

- AXC Bathroom Ventilation Kits 12
- TF100-EC Tranquil Bathroom Fan 13
- TF140-EC Tranquil Bathroom Fan 14
- TF140-DC Tranquil Bathroom Fan 15
- TF Tranquil Bathroom Fans 16
- TF400 Tranquil Bathroom Fan 17
- CEF Ceiling Exhaust Fans 18

AIR PURIFIERS

- CX1000 Portable Air Purifier 19

DAMPERS

- BDD Backdraft Dampers 20
- IRIS Dampers 21

ACCESSORIES, GRILLES & CONTROLS

- Accessories 22
- Grilles 23
- Controls 23

DESTRATIFICATION FANS

- DSF Destratification Fans 24

WALL FANS

- SEF Shutter Mount Wall Fans 25
- PEF Panel Mount Wall Fans 25
- GEF Guard Mount Wall Fans 25

ROOF & WALL EXHAUST FANS

- CUD Direct Drive Upblast Fans 26
- CDD Direct Drive Downblast Fans 28
- RMD Direct Drive Axial Exhaust Fans 30

OEM AND INDUSTRIAL FANS & BLOWERS

- OEM / Industrial Fans & Blowers 31

CFM SELECT

For latest pricing and fan selection, create an account at cfmselect.com.



TERMS & CONDITIONS OF SALE

For terms & conditions of sale, visit continentalfan.com.



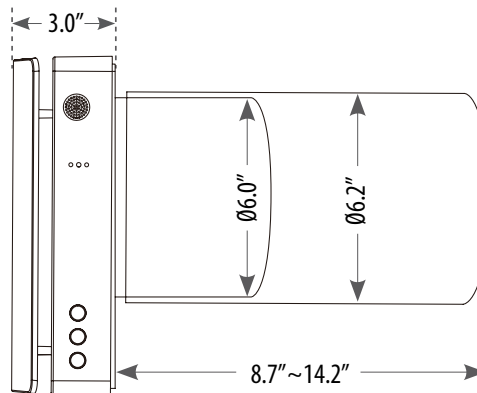
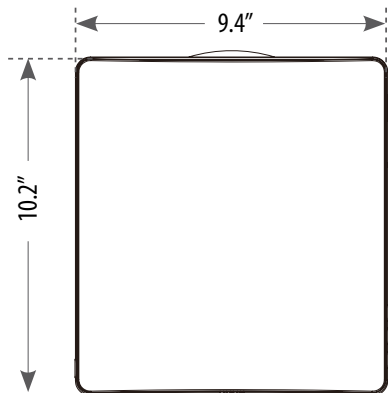
ECO-FLO^{Plus} ENERGY RECOVERY VENTILATOR



ECO-FLO^{Plus} ERV is the all-in-one ventilation solution for new construction and renovation projects. This compact ventilator is capable of exhausting stale indoor air and supplying fresh filtered outdoor air. The energy recovered from the exhaust air will pre-heat or pre-cool the incoming supply air (depending on the season).

Features & Benefits

- Supplies fresh outdoor air and exhausts stale indoor air
- Real-time monitoring of indoor CO2 concentration
- Quiet operation - less than 32.7dB(A)
- Low energy demand 11.5 watts
- Easily control from the app, remote, or ventilator casing
- Reversible 3-speed axial fan with an energy efficient DC motor
- High-tech ceramic energy regenerator with heat recovery efficiency up to 97%
- Air purification with a pre-filter and MERV11 (F7) filter
- Built-in temperature sensor
- Automatic shutter prevents backdrafts
- Plain white interior panel
- Simple through-the-wall installation
- Frost and condensation free
- Flexible operation, working individually or in groups



Exterior Grille Not Shown

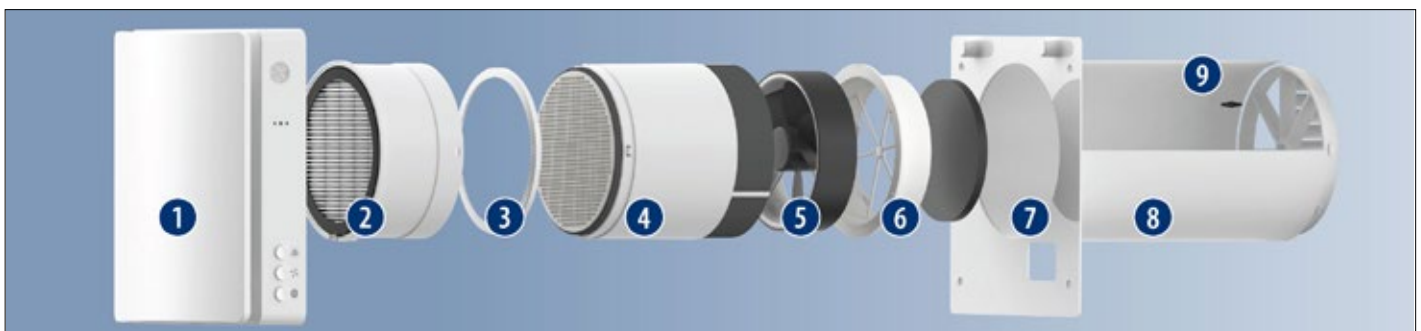
Consult factory for walls thicker or thinner than the standard dimensions.

| | PERFORMANCE | | | | | | | | | |
|-------------------------|------------------|--------|-------|------|----------------------------|---------------------|--|--------------|-------------------------|-------------------------|
| MODEL | THERMAL RECOVERY | SPEED | WATTS | AMPS | AIRFLOW (CFM) ¹ | | AIRFLOW (CFM) ² (BOOST MODE MAX) | RPM (MAX) | SOUND PRESSURE (dBA) | POWER SUPPLY |
| | | | | | (with F7 Filter) | (without F7 Filter) | | | | |
| ECO-FLO ^{Plus} | Up to 97% | Low | 9.7 | 0.14 | 11.8 | 20.0 | 35 | 2200 | 32.7 | 100V~240V AC 50-60Hz |
| | | Medium | 10.7 | 0.15 | 23.5 | 33.0 | | | | |
| | | High | 11.5 | 0.16 | 29.4 | 41.2 | | | | |

1. AIRFLOW IN SUPPLY/EXHAUST MODE

2. MAX AIRFLOW UNDER FAN BOOST MODE

IP X4 INGRESS PROTECTION



| | | | |
|------------------------|-------------------------------|-----------------------|-----------------------------|
| 1. Ventilation unit | 4. Ceramic energy regenerator | 7. Mounting plate | Exterior grille - not shown |
| 2. MERV 11 (F7) filter | 5. 12V DC fan | 8. Air duct | |
| 3. Pre-filter | 6. Separation ring | 9. Temperature sensor | |

AXC IN-LINE DUCT FANS



AXC fans are designed for residential, commercial and light industrial ventilation applications. The quiet, efficient backward-curved motorized impeller is capable of developing significant pressure, and the in-line configuration simplifies installation.

Features & Benefits

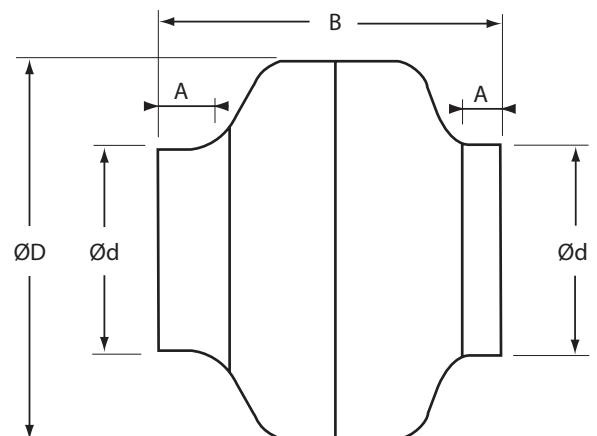
- Heavy gauge, drawn steel housing with baked epoxy finish
- 120V operation, other voltages available
- Easy to install - mounting brackets included
- May be mounted in any position
- Fans may be used to supply or exhaust air
- Suitable for air temperatures up to 140 °F / 60 °C
- Speed controllable (optional solid state speed control)
- Optional pre-wired with 120V power cord (AXC-C)
- Exceptionally quiet and efficient BC centrifugal motorized impeller
- External rotor motor design results in superior motor cooling
- Permanently lubricated ball bearing motor for maintenance-free operation
- Automatic reset thermal overload protection
- Fan and motor are precision balanced for quiet and vibration-free operation
- Easily accessible, external junction box with pre-wired capacitor
- Available to fit duct sizes 4" - 12"; airflow capacities to 970 cfm

Accessories & Controls ~ pages 22-23

| MODEL | WATTS | RPM | AIRFLOW PERFORMANCE (CFM) | | | | | | | | |
|------------|-------|------|---------------------------|---------|---------|---------|---------|---------|---------|---------|---------|
| | | | 0" SP | 0.2" SP | 0.4" SP | 0.6" SP | 0.8" SP | 1.0" SP | 1.2" SP | 1.5" SP | 2.0" SP |
| AXC100A-ES | 43.3 | 2580 | 147 | 130 | 107 | 82 | 57 | 34 | 11 | | |
| AXC100B | 83.4 | 2620 | 150 | 140 | 127 | 112 | 94 | 74 | 53 | 23 | |
| AXC125A-ES | 44.4 | 2520 | 179 | 150 | 121 | 87 | 49 | 14 | | | |
| AXC125B | 85.4 | 2750 | 183 | 160 | 141 | 122 | 101 | 77 | 51 | 14 | |
| AXC150A-ES | 46.8 | 2390 | 235 | 190 | 148 | 97 | 44 | | | | |
| AXC150B-ES | 89.2 | 2450 | 308 | 260 | 216 | 175 | 139 | 108 | 81 | 47 | |
| AXC200A-ES | 84.5 | 2500 | 368 | 300 | 234 | 184 | 149 | 114 | 70 | | |
| AXC200B-ES | 188 | 2550 | 579 | 520 | 453 | 387 | 329 | 282 | 245 | 206 | 154 |
| AXC250-ES | 198 | 2470 | 616 | 550 | 488 | 431 | 379 | 330 | 286 | 227 | 143 |
| AXC300A-ES | 206 | 2450 | 780 | 700 | 595 | 420 | 330 | 290 | 255 | 210 | 132 |
| AXC300B-ES | 312 | 2780 | 970 | 910 | 803 | 680 | 559 | 453 | 367 | 273 | 164 |

FOR PRE-WIRED WITH 120V POWER CORD, ADD -C TO MODEL.

| MODEL | DIMENSIONS IN INCHES | | | | SHIP WT (lbs) |
|------------|----------------------|------|-----|------|---------------|
| | ØD | Ød | A | B | |
| AXC100A-ES | 9.5 | 3.9 | 1.0 | 8.3 | 7.5 |
| AXC100B | 9.5 | 3.9 | 1.0 | 8.3 | 8.0 |
| AXC125A-ES | 9.5 | 4.8 | 1.0 | 8.3 | 7.5 |
| AXC125B | 9.5 | 4.8 | 1.0 | 8.3 | 7.5 |
| AXC150A-ES | 9.5 | 5.8 | 1.0 | 8.3 | 7.5 |
| AXC150B-ES | 13.2 | 5.8 | 1.0 | 9.1 | 12.5 |
| AXC200A-ES | 13.2 | 7.8 | 1.0 | 9.1 | 12.0 |
| AXC200B-ES | 13.2 | 7.8 | 1.0 | 9.1 | 15.0 |
| AXC250-ES | 13.2 | 9.8 | 1.0 | 9.1 | 15.0 |
| AXC300A-ES | 15.9 | 11.8 | 1.2 | 11.8 | 18.0 |
| AXC300B-ES | 15.9 | 11.8 | 1.2 | 11.8 | 18.0 |



DO NOT USE FOR CONSTRUCTION
CONSULT FACTORY FOR CERTIFIED PRINTS

AXS EC IN-LINE DUCT FANS



With its efficient electronically commutated (EC) motorized impeller, AXS EC fans set new standards for efficiency and versatility. The efficient backward-curved impeller can develop significant pressure. AXS EC fans are suitable for residential, commercial and light industrial ventilation applications.

Features & Benefits

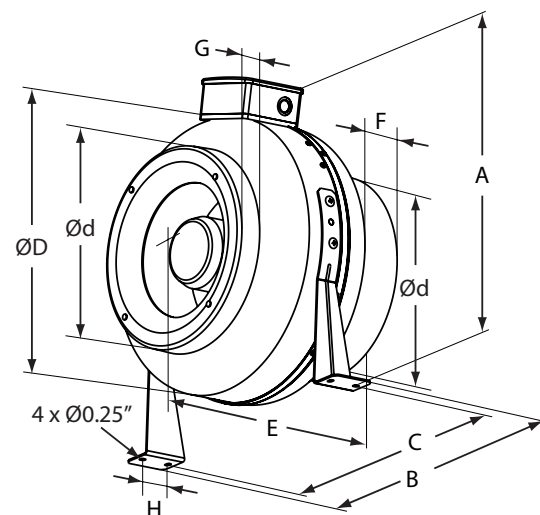
- Efficient electronically commutated (EC) motorized impeller
- Energy efficient
- Corrosion resistant, durable steel housing with polymer coating
- 120V, 60 Hz operation; single phase
- Easy to install - mounting brackets included
- Suitable for air temperatures up to 105 °F
- Optional pre-wired with 120V power cord (AXS-EC-C)
- Speed controllable 0-10 V
- External rotor motor design results in superior motor cooling
- Rated for continuous operation
- Permanently lubricated ball bearing motor for maintenance-free operation
- Automatic reset thermal overload protection
- Fan and motor are precision balanced for quiet, vibration-free operation
- Available to fit duct sizes 4"-12"
- Airflow capacities to 801 cfm

Accessories & Controls ~ pages 22-23

| | | | AIRFLOW PERFORMANCE (CFM) | | | | | | | | | | |
|-----------|-------|------|---------------------------|-----------|---------|----------|-----------|---------|----------|---------|----------|---------|---------|
| MODEL | WATTS | RPM | 0" SP | 0.125" SP | 0.2" SP | 0.25" SP | 0.375" SP | 0.5" SP | 0.75" SP | 1.0" SP | 1.25" SP | 1.5" SP | 2.5" SP |
| AXS100-EC | 33.0 | 2760 | 151 | 141 | 135 | 130 | 120 | 110 | 90 | 70 | 49 | 29 | |
| AXS125-EC | 57.1 | 3396 | 248 | 239 | 231 | 225 | 211 | 198 | 170 | 143 | 115 | 88 | |
| AXS150-EC | 75.1 | 3336 | 306 | 299 | 291 | 285 | 272 | 258 | 231 | 204 | 176 | 149 | 40 |
| AXS200-EC | 99.0 | 2820 | 539 | 510 | 494 | 484 | 458 | 432 | 380 | 328 | 277 | 225 | 18 |
| AXS250-EC | 133.6 | 2628 | 667 | 600 | 586 | 577 | 553 | 530 | 484 | 438 | 392 | 346 | 161 |
| AXS300-EC | 173.5 | 2796 | 801 | 741 | 726 | 716 | 690 | 665 | 614 | 563 | 512 | 461 | 257 |

WATTS ARE INDICATED AT 100% SPEED
FOR PRE-WIRED WITH 120V POWER CORD, ADD -C TO MODEL.

| MODEL | DIMENSIONS IN INCHES | | | | | | | | | | SHIP WT (lbs) |
|-----------|----------------------|------|------|------|------|------|------|-----|-----|-----|---------------|
| | DUCT DIA. | ØD | Ød | A | B | C | E | F | G | H | |
| AXS100-EC | 4" | 10.0 | 3.9 | 13.4 | 12.2 | 10.6 | 8.0 | 0.8 | 1.0 | 1.2 | 7.0 |
| AXS125-EC | 5" | 10.0 | 4.8 | 13.4 | 12.2 | 10.6 | 8.0 | 0.8 | 1.0 | 1.2 | 6.8 |
| AXS150-EC | 6" | 12.0 | 5.8 | 14.2 | 14.2 | 12.6 | 7.9 | 0.8 | 1.0 | 1.2 | 8.2 |
| AXS200-EC | 8" | 13.6 | 7.8 | 17.1 | 15.6 | 14.0 | 9.6 | 1.0 | 1.2 | 1.6 | 11.2 |
| AXS250-EC | 10" | 13.6 | 9.8 | 17.1 | 15.6 | 14.0 | 9.8 | 1.0 | 1.2 | 1.6 | 12.8 |
| AXS300-EC | 12" | 15.9 | 11.9 | 18.3 | 17.9 | 16.3 | 10.2 | 1.2 | 1.2 | 1.6 | 15.8 |



DO NOT USE FOR CONSTRUCTION
CONSULT FACTORY FOR CERTIFIED PRINTS



AXP IN-LINE DUCT FANS



Features & Benefits

- UV and corrosion resistant, durable plastic housing
- 120V operation, other voltages available
- Easy to install - mounting brackets included
- May be mounted in any position
- Fans may be used to supply or exhaust air
- Suitable for air temperatures up to 122 °F
- Energy efficient - speed controllable (optional solid state speed control)
- Optional pre-wired with 120V power cord (AXP-C)
- Exceptionally quiet and efficient BC centrifugal motorized impeller
- External rotor motor design results in superior motor cooling
- Permanently lubricated ball bearing motor for maintenance-free operation
- Automatic reset thermal overload protection
- Fan and motor are precision balanced for quiet, vibration-free operation
- Easily accessible, external junction box with pre-wired capacitor
- Available to fit duct sizes 4" - 12"; airflow capacities to 837 cfm

AXP fans are designed for residential, commercial and light industrial ventilation applications. The quiet, efficient backward-curved motorized impeller is capable of developing significant pressure, and the in-line configuration simplifies installation.

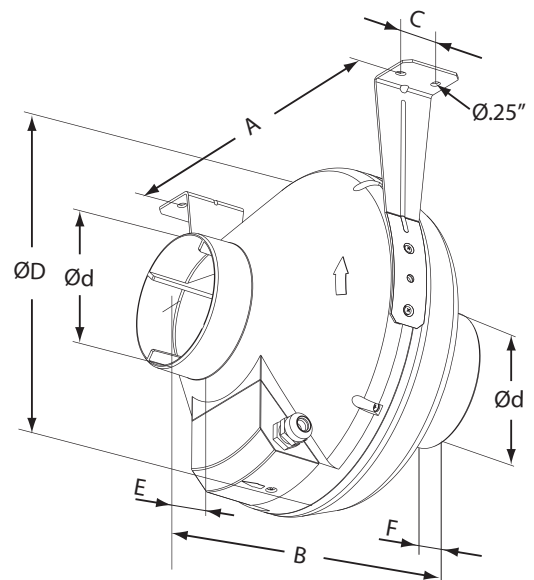
Accessories & Controls ~ pages 22-23

| MODEL | WATTS | RPM | AIRFLOW PERFORMANCE (CFM) | | | | | |
|--------|-------|------|---------------------------|---------|---------|----------|---------|---------|
| | | | 0" SP | 0.2" SP | 0.5" SP | 0.75" SP | 1.0" SP | 1.5" SP |
| AXP100 | 106 | 3088 | 162 | 150 | 134 | 120 | 104 | 67 |
| AXP125 | 114 | 2960 | 235 | 214 | 178 | 151 | 123 | 72 |
| AXP150 | 113 | 2907 | 317 | 289 | 247 | 212 | 178 | 68 |
| AXP200 | 142 | 2650 | 583 | 544 | 462 | 390 | 320 | 196 |
| AXP250 | 293 | 2604 | 735 | 675 | 588 | 507 | 432 | 307 |
| AXP300 | 271 | 2741 | 837 | 772 | 659 | 564 | 474 | 307 |

FOR PRE-WIRED WITH 120V POWER CORD, ADD -C TO MODEL.

| MODEL | DIMENSIONS IN INCHES | | | | | | | | SHIP WT (lbs) |
|---------|----------------------|------|------|------|------|-----|-----|-----|---------------|
| | DUCT DIA. | ØD | Ød | A | B | C | E | F | |
| AXP100 | 4" | 9.8 | 3.9 | 10.6 | 9.1 | 1.2 | 1.2 | 1.1 | 7.0 |
| AXP125 | 5" | 9.8 | 4.9 | 10.6 | 8.7 | 1.2 | 1.2 | 1.1 | 7.0 |
| AXP150 | 6" | 11.8 | 5.9 | 12.2 | 11.3 | 1.2 | 1.2 | 1.2 | 8.0 |
| AXP200 | 8" | 13.4 | 7.9 | 13.9 | 10.9 | 1.6 | 1.2 | 1.2 | 9.0 |
| AXP250 | 10" | 13.4 | 9.8 | 13.9 | 10.4 | 1.6 | 1.2 | 1.2 | 12.0 |
| AXP300* | 12" | 15.8 | 12.3 | 16.3 | 16.3 | 1.6 | 1.6 | 2.2 | 14.0 |

*INCLUDES 2 DUCT REDUCERS TO FIT 12" DUCT
DO NOT USE FOR CONSTRUCTION
CONSULT FACTORY FOR CERTIFIED PRINTS



MFT & MFT-S MIXED FLOW IN-LINE FANS



MFT & MFT-S fans feature a quiet two-speed motor. The specially designed housing of MFT-S models is optimized with an aerodynamic diffuser and specially designed impeller to produce powerful pressure and airflow.

Features & Benefits

- UV and corrosion resistant, durable plastic housing
- Virtually silent MFT-S models, aerodynamically designed for smooth airflow
- Powerful, compact and quiet mixed flow impeller
- Easy to install - mounting brackets included
- May be mounted in any position
- Ideal for long duct runs
- Fans may be used to supply or exhaust air
- Suitable for air temperatures up to 140 °F
- Optional pre-wired with 120V power cord (MFT-C / MFT-S-C)
- Energy efficient two-speed motor
- Single-phase asynchronous motor; IP X4 protection
- Permanently lubricated ball bearing motor for maintenance-free operation
- Automatic reset thermal overload protection
- Fan and motor are precision balanced for quiet, vibration-free operation
- Easy access to motor and impeller; no need to dismantle ductwork

Accessories & Controls ~ pages 22-23

| | | | | | AIRFLOW PERFORMANCE (CFM) | | | | | | | | | | | | | | | | | |
|--------|------|------|-------|------|---------------------------|-----|-----------|-----|----------|-----|----------|-----|----------|-----|----------|-----|---------|-----|----------|-----|---------|-----|
| MODEL | RPM | | WATTS | | 0" SP | | 0.125" SP | | 0.20" SP | | 0.25" SP | | 0.50" SP | | 0.75" SP | | 1.0" SP | | 1.25" SP | | 1.5" SP | |
| | HIGH | LOW | HIGH | LOW | HIGH | LOW | HIGH | LOW | HIGH | LOW | HIGH | LOW | HIGH | LOW | HIGH | LOW | HIGH | LOW | HIGH | LOW | HIGH | LOW |
| MFT100 | 3113 | 2818 | 36 | 29.5 | 105 | 62 | 49 | 41 | 37 | 30 | 32 | 23 | 13 | 2 | | | | | | | | |
| MFT125 | 2600 | 2350 | 41 | 31 | 126 | 87 | 112 | 64 | 99 | 27 | 46 | 4 | | | | | | | | | | |
| MFT150 | 2033 | 1386 | 55 | 29 | 252 | 167 | 233 | 129 | 216 | 75 | 199 | 61 | 78 | 21 | 10 | - | | | | | | |
| MFT200 | 2116 | 1622 | 111 | 69.5 | 473 | 349 | 450 | 317 | 432 | 294 | 420 | 276 | 352 | 158 | 254 | 32 | 89 | | | | | |
| MFT250 | 2525 | 1925 | 200 | 130 | 880 | 655 | 873 | 873 | 866 | 630 | 862 | 620 | 816 | 480 | 708 | 330 | 581 | 230 | 450 | 115 | 323 | 10 |
| MFT300 | 2419 | 1914 | 353 | 236 | 1051 | 830 | 1020 | 797 | 999 | 770 | 986 | 751 | 914 | 638 | 838 | 496 | 746 | 335 | 632 | 209 | 500 | 109 |

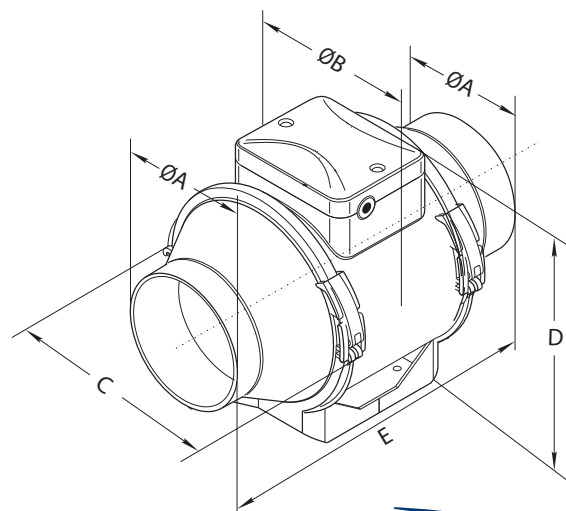
| MODEL | RPM | | WATTS | | 0" SP | | 0.1" SP | | 0.2" SP | | 0.3" SP | | 0.4" SP | | 0.5" SP | | 0.6" SP | | 0.7" SP | | 0.8" SP | | 0.9" SP | | 1.0" SP | |
|---------|------|------|-------|-----|-------|-----|---------|-----|---------|-----|---------|-----|---------|-----|---------|-----|---------|-----|---------|-----|---------|-----|---------|-----|---------|-----|
| | | | | | HIGH | | HIGH | | HIGH | | HIGH | | HIGH | | HIGH | | HIGH | | HIGH | | HIGH | | HIGH | | HIGH | |
| | HIGH | LOW | HIGH | LOW | HIGH | LOW | HIGH | LOW | HIGH | LOW | HIGH | LOW | HIGH | LOW | HIGH | LOW | HIGH | LOW | HIGH | LOW | HIGH | LOW | HIGH | LOW | HIGH | LOW |
| MFT100S | 1994 | 1500 | 30 | 24 | 146 | 109 | 128 | 88 | 110 | 68 | 88 | 47 | 64 | 22 | 44 | 10 | 21 | - | 9 | - | - | - | - | - | - | - |
| MFT125S | 2059 | 1360 | 37 | 25 | 200 | 132 | 183 | 106 | 161 | 80 | 137 | 51 | 93 | 13 | 62 | - | 32 | - | 0 | - | - | - | - | - | - | - |
| MFT150S | 2617 | 1933 | 66 | 52 | 327 | 240 | 316 | 219 | 299 | 194 | 283 | 171 | 268 | 134 | 247 | 111 | 225 | 86 | 194 | 57 | 138 | 27 | 83 | 7 | 50 | - |

WATTS ARE SHOWN AT 0.2 IN. SP

FOR PRE-WIRED WITH 120V POWER CORD, ADD -C TO MODEL.

| MODEL | DIMENSIONS IN INCHES | | | | | | SHIP WT (LBS) |
|---------|----------------------|------|------|------|------|------|---------------|
| | DUCT DIA. | ØA | ØB | C | D | E | |
| MFT100 | 4" | 3.8 | 5.5 | 6.6 | 7.5 | 9.7 | 5.0 |
| MFT125 | 5" | 4.8 | 5.5 | 6.6 | 7.5 | 9.7 | 5.0 |
| MFT150 | 6" | 5.8 | 7.7 | 8.8 | 9.8 | 11.6 | 8.0 |
| MFT200 | 8" | 7.8 | 8.3 | 9.4 | 10.3 | 11.6 | 16.0 |
| MFT250 | 10" | 9.8 | 10.1 | 11.3 | 12.7 | 15.2 | 20.0 |
| MFT300* | 12" | 12.3 | 12.7 | 14.3 | 16.1 | 22.9 | 27.0 |
| MFT100S | 4" | 3.8 | - | 7.7 | 8.9 | 11.9 | 5.0 |
| MFT125S | 5" | 4.8 | - | 7.7 | 8.9 | 10.2 | 5.0 |
| MFT150S | 6" | 5.8 | - | 8.7 | 9.8 | 11.4 | 8.0 |

*INCLUDES 2 DUCT REDUCERS TO FIT 12" DUCT
DO NOT USE FOR CONSTRUCTION PRINTS
CONSULT FACTORY FOR CERTIFIED



MBI CENTRIFUGAL IN-LINE FANS



MBI fans are designed for residential and light commercial ventilation applications. Multiple source ducting options offer the perfect solution for whole house ventilation in multi-unit housing complexes.

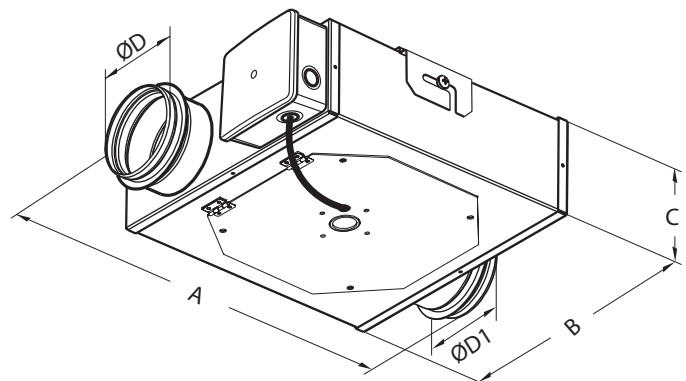
Features & Benefits

- Steel housing with corrosion resistant finish
- 120V operation, other voltages available
- Removable fan cover for easy maintenance
- Easy to install - mounting brackets included
- Multiple source ducting options
- Fans may be used to supply or exhaust air
- Suitable for air temperatures up to 140 °F
- Energy efficient - speed controllable (optional solid state speed control)
- Exceptionally quiet and efficient BC centrifugal motorized impeller
- Single-phase asynchronous external rotor motor
- Permanently lubricated ball bearing motor for maintenance-free operation
- Automatic reset thermal overload protection
- Fan and motor are precision balanced for quiet, vibration-free operation
- Easily accessible, external junction box with pre-wired capacitor
- Available to fit duct sizes 4", 5" & 6"; airflow capacities to 290 cfm

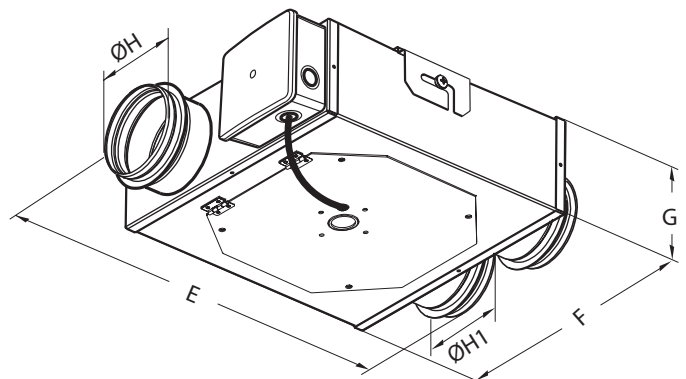
Accessories & Controls ~ pages 22-23

| MODEL | WATTS | RPM | AIRFLOW PERFORMANCE (CFM) | | | | | | | | | |
|------------|-------|------|---------------------------|-----------|----------|----------|----------|----------|---------|----------|---------|----------|
| | | | 0" SP | 0.125" SP | 0.20" SP | 0.25" SP | 0.50" SP | 0.75" SP | 1.0" SP | 1.25" SP | 1.5" SP | 1.75" SP |
| MBI100 | 105 | 3090 | 147 | 143 | 139 | 137 | 123 | 110 | 99 | 90 | 76 | 56 |
| MBI125 | 113 | 2920 | 173 | 169 | 165 | 162 | 147 | 126 | 106 | 85 | 58 | 30 |
| MBI150 | 110 | 2020 | 221 | 214 | 206 | 200 | 171 | 145 | 120 | 92 | 65 | 36 |
| MBI125/100 | 117 | 2920 | 232 | 225 | 219 | 216 | 197 | 173 | 148 | 125 | 99 | 73 |
| MBI150/125 | 110 | 2155 | 290 | 273 | 262 | 252 | 211 | 178 | 146 | 114 | 84 | 57 |

| IN-LINE BOOSTER FAN | | | | | | | |
|----------------------|-----------|------|------|-----|-----|-----|---------------|
| DIMENSIONS IN INCHES | | | | | | | |
| MODEL | DUCT DIA. | A | B | C | ØD | ØD1 | SHIP WT (lbs) |
| MBI100 | 4" | 14.3 | 9.9 | 4.8 | 3.9 | 3.9 | 12.0 |
| MBI125 | 5" | 16.6 | 9.9 | 5.7 | 4.9 | 4.9 | 12.0 |
| MBI150 | 6" | 19.7 | 11.8 | 7.1 | 5.9 | 5.9 | 16.0 |



| TWIN INTAKE FAN | | | | | | | |
|----------------------|-----------|------|------|-----|-----|-----|---------------|
| DIMENSIONS IN INCHES | | | | | | | |
| MODEL | DUCT DIA. | E | F | G | ØH | ØH1 | SHIP WT (lbs) |
| MBI125/100 | 5" / 4" | 16.6 | 9.9 | 5.7 | 4.9 | 3.9 | 12.0 |
| MBI150/125 | 6" / 5" | 19.7 | 11.8 | 7.1 | 5.9 | 4.9 | 16.0 |



DO NOT USE FOR CONSTRUCTION
CONSULT FACTORY FOR CERTIFIED PRINTS



EXM EXTERNAL MOUNT DUCT FANS



EXM external mount duct fans offer the perfect solution when limited space prevents the use of an in-line duct fan. Access and maintenance are simplified with the through-the-wall design of an EXM fan that mounts on an exterior wall.

Features & Benefits

- Steel housing with polymer coating
- Removable fan cover for easy maintenance
- Sidewall mounted on the exterior of a building
- Quiet and efficient BC centrifugal motorized impeller
- External rotor motor design results in superior motor durability
- Suitable for air temperatures up to 113 °F
- 120V, 60 Hz; single phase operation
- Permanently lubricated ball bearing motor for maintenance-free operation
- Automatic reset thermal overload protection
- IP X4 protection
- Fits 4", 5", 6" & 8" duct
- Airflow capacity to 306 cfm
- Two-year warranty

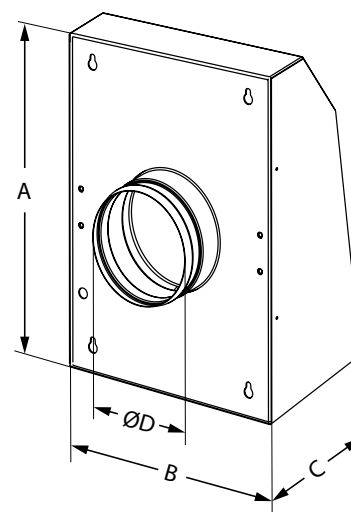
Accessories & Controls ~ pages 22-23

| MODEL | WATTS | RPM | AIRFLOW PERFORMANCE (CFM) | | | | |
|--------|-------|------|---------------------------|----------|---------|---------|---------|
| | | | 0" SP | 0.25" SP | 0.5" SP | 1.0" SP | 1.5" SP |
| EXM100 | 108 | 3100 | 238 | 223 | 204 | 134 | 30 |
| EXM125 | 108 | 2950 | 248 | 231 | 213 | 146 | 25 |
| EXM150 | 109 | 2250 | 302 | 286 | 256 | 159 | 27 |
| EXM200 | 106 | 2300 | 306 | 291 | 258 | 148 | 9 |

RPM AND WATTS ARE INDICATED AT 0.2" SP

| MODEL | DIMENSIONS IN INCHES | | | | | SHIP WT (lbs) |
|--------|----------------------|-----|------|------|-----|---------------|
| | DUCT DIA. | ØD | A | B | C | |
| EXM100 | 4" | 3.9 | 14.0 | 10.3 | 5.4 | 9.0 |
| EXM125 | 5" | 4.9 | 14.0 | 10.3 | 5.4 | 9.0 |
| EXM150 | 6" | 5.9 | 15.8 | 11.8 | 5.4 | 9.9 |
| EXM200 | 8" | 7.9 | 15.8 | 11.8 | 5.4 | 9.9 |

DO NOT USE FOR CONSTRUCTION
CONSULT FACTORY FOR CERTIFIED PRINTS



RESIDENTIAL & COMMERCIAL VENTILATION APPLICATIONS:

- Bathroom exhaust
- Kitchen ventilation
- Crawl space ventilation
- Whole house ventilation
- Garages
- Office
- Warehouse
- Restaurant

ARI-C RADON FANS

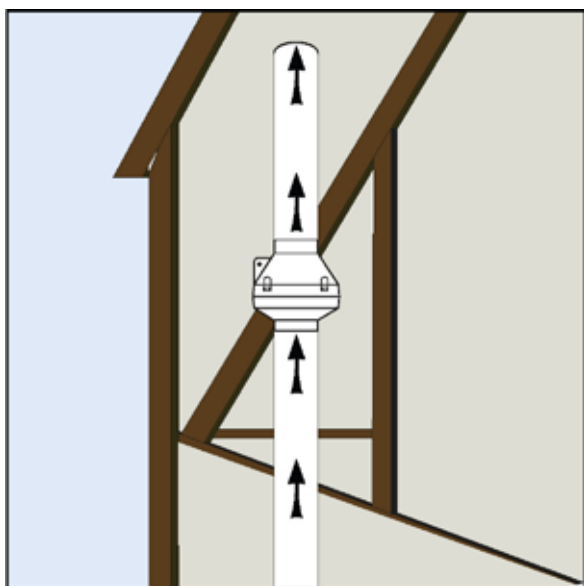


ARI-C radon fans are specifically designed to mitigate radon gas in homes. Radon gas is a naturally occurring, radioactive gas that is emitted from the ground due to the decay of uranium in the soil. By installing an ARI fan in a home, this hazardous gas can be safely exhausted.

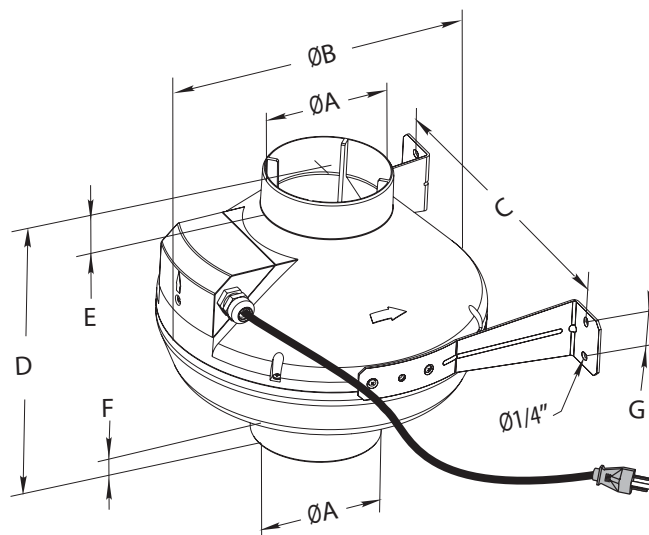
Features & Benefits

- Quiet, powerful, radon mitigation fan
- Factory sealed, water tight housing and junction box
- UV and corrosion resistant, durable plastic housing
- Easy to install - mounting brackets included
- May be mounted in any interior space like a basement, attic or crawl space
- Ideal for long duct runs
- Suitable for air temperatures up to 122 °F
- Pre-wired with 120V power cord
- Exceptionally quiet and efficient BC centrifugal motorized impeller
- External rotor motor design results in superior motor cooling
- Permanently lubricated ball bearing motor for maintenance-free operation
- Automatic reset thermal overload protection
- Easily accessible, external junction box
- Available to fit duct sizes 4" - 8"
- Airflow capacities to 583 cfm

Accessories & Controls ~ pages 22-23



Interior Installation only



| MODEL | WATTS | RPM | AIRFLOW PERFORMANCE (CFM) | | | | | | |
|----------|-------|------|---------------------------|---------|---------|----------|---------|---------|--|
| | | | 0" SP | 0.2" SP | 0.5" SP | 0.75" SP | 1.0" SP | 1.5" SP | |
| ARI100-C | 106 | 3088 | 162 | 150 | 134 | 120 | 104 | 67 | |
| ARI125-C | 114 | 2960 | 235 | 214 | 178 | 151 | 123 | 72 | |
| ARI150-C | 113 | 2907 | 317 | 289 | 247 | 212 | 178 | 68 | |
| ARI200-C | 142 | 2650 | 583 | 544 | 462 | 390 | 320 | 196 | |

| MODEL | DIMENSIONS IN INCHES | | | | | | | | SHIP WT (lbs) |
|----------|----------------------|------|-----|------|------|-----|-----|-----|---------------|
| | DUCT DIA. | ØB | ØA | C | D | G | E | F | |
| ARI100-C | 4" | 9.8 | 3.9 | 10.6 | 9.1 | 1.2 | 1.2 | 1.1 | 7.0 |
| ARI125-C | 5" | 9.8 | 4.9 | 10.6 | 8.7 | 1.2 | 1.2 | 1.1 | 7.0 |
| ARI150-C | 6" | 11.8 | 5.9 | 12.2 | 11.3 | 1.2 | 1.2 | 1.2 | 8.0 |
| ARI200-C | 8" | 13.4 | 7.9 | 13.9 | 10.9 | 1.6 | 1.2 | 1.2 | 9.0 |

DO NOT USE FOR CONSTRUCTION
CONSULT FACTORY FOR CERTIFIED PRINTS



DVK DRYER BOOSTER FAN



The DVK dryer booster fan is designed to enhance the drying efficiency of a dryer. Fans feature quiet and efficient backward curved impellers that are capable of overcoming long duct runs, and an in-line configuration that simplifies installation. Unique design features result in a quiet and powerful solution.

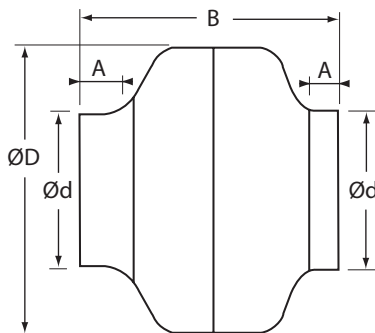
Features & Benefits

- Boosts dryer efficiency and reduces drying time
- External rotor motor design for quiet and efficient operation
- Backward-curved centrifugal impeller to overcome long duct runs
- In-line construction to reduce lint build-up
- Heavy gauge, drawn steel housing with baked epoxy finish
- High temperature construction: 60 C/140 °F
- Thermal overload protection
- Automatic reset

Installation Tips

- DVK100B fans should be mounted at least 15 linear feet from dryer.
- Each 90-degree elbow is equivalent to 5 linear feet of duct.
- DVK100B fans are designed to vent up to 110 feet of 4-inch rigid duct.

Accessories & Controls ~ pages 22-23



| MODEL | WATTS | RPM | AIRFLOW PERFORMANCE (CFM) | | | | | | | |
|---------|-------|------|---------------------------|---------|---------|---------|---------|---------|---------|---------|
| | | | 0" SP | 0.2" SP | 0.4" SP | 0.6" SP | 0.8" SP | 1.0" SP | 1.2" SP | 1.5" SP |
| DVK100B | 83.4 | 2620 | 150 | 140 | 127 | 112 | 94 | 74 | 53 | 23 |

| MODEL | DIMENSIONS IN INCHES | | | | SHIP WT (lbs) |
|---------|----------------------|-----|-----|-----|---------------|
| | ØD | Ød | A | B | |
| DVK100B | 9.5 | 3.9 | 1.0 | 8.3 | 8.0 |

DO NOT USE FOR CONSTRUCTION
CONSULT FACTORY FOR CERTIFIED PRINTS

BOOSTER FAN ACTIVATION METHODS



Current Sensor (DVK100B-C Kit)

This is the preferred method for activating a dryer booster fan. When a clothes dryer is operating and drawing at least one amp of current, the current sensor automatically activates the DVK100B dryer booster fan.



Pressure Switch (DVK100B-P Kit)

The pressure switch is designed to be mounted in the duct between the fan and the dryer. When it senses dryer airflow, the switch activates the DVK100B dryer booster fan.



Pressure Switch - Mounted (DVK100B-PM Kit)

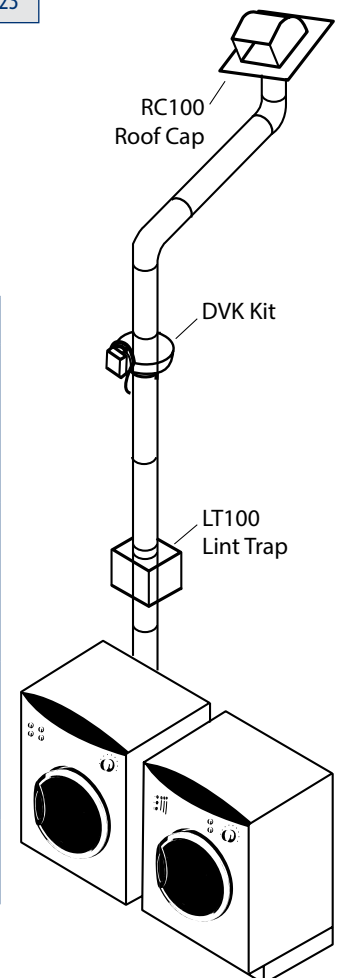
The pre-mounted pressure switch simplifies installation. Utilizing the components found in the DVK100B-P kit, the pressure switch is pre-wired and factory mounted to the DVK100B dryer booster fan.

Each of the above booster fan activation methods may be purchased as a separate accessory item.

Note: Continental Fan does not recommend wiring a dryer booster fan directly into a clothes dryer.

Helpful Hints

A LT100 Lint Trap may be installed between the dryer and the booster fan to reduce lint build-up and maintenance on the fan.



AXC BATHROOM VENTILATION KITS



Features & Benefits

- Quiet, powerful, compact ventilation
- Exhaust is two to four times greater than traditional bathroom fans
- Remote mount in-line duct fan design
- Suitable for direct shower ventilation
- Designed to handle long duct runs
- Easy-to-install fan kits:
 - Adjustable grille bathroom ventilation kits
 - AeroGrille bathroom ventilation kits

Helpful Tips

- AXC fan mounts easily to attic joists.
- Always use insulated duct in unheated spaces.
- When direct venting a shower, or if noise is a significant factor, use insulated flexible duct to reduce condensation and/or noise levels.
- Add a DFC digital fan control for smart control technology and energy savings.

Accessories & Controls ~ pages 22-23

AXC fans provide exhaust that is two to four times greater than traditional bathroom fans. The remote mounted design is suitable for direct shower ventilation and for use with multiple ventilation points.

| ROOM SIZE | FAN MODEL | AVAILABLE KITS |
|-------------------|------------|--|
| Up to 100 sq. ft. | AXC100A-ES | RG100-ES; AGK100-ES |
| Up to 150 sq. ft. | AXC150A-ES | RG150A-ES; AGK150A-ES; DX150A-ES; DXAGK150A-ES |
| Over 150 sq. ft. | AXC200A-ES | DX200A-ES |

NOTE: DX KITS FEATURE TWO VENTS.

Adjustable Grille Bathroom Ventilation Kits

Attack moisture at its source. Vary airflow to suit your needs.

RG Kits Include:

AXC Fan, Mounting Brackets, GR Adjustable Grille/Collar (1), Gear Clamp (3)

- ☐ RG100-ES: 4" Fan, 147 cfm
- ☐ RG150A-ES: 6" Fan, 235 cfm



DX Kits Include:

AXC Fan, Mounting Brackets, GR Adjustable Grilles/Collar (2), Gear Clamp (7), Y-Fitting (1)

- ☐ DX150A-ES: 6" Fan, 235 cfm
- ☐ DX200A-ES: 8" Fan, 368 cfm



AeroGrille Bathroom Ventilation Kits

The attractive, non-adjustable AeroGrille provides superior ventilation when combined with an AXC in-line duct fan.

AGK Kits Include:

AXC Fan, Mounting Brackets, AeroGrille/Collar/Damper (1), Gear Clamp (3)

- ☐ AGK100-ES: 4" Fan, 147 cfm
- ☐ AGK150A-ES: 6" Fan, 235 cfm



DXAGK Kit Includes:

AXC Fan, Mounting Brackets, AeroGrille/Collar/Damper (2), Gear Clamp (7), Y-Fitting (1)

- ☐ DXAGK150A-ES: 6" Fan, 235 cfm



TF100-EC TRANQUIL BATHROOM FAN



With its high efficiency EC motor, the TF100-EC bathroom fan offers whisper-quiet exhaust with sones ranging from 0.3 to 1.0. Toggle-switch positioning determines the maximum desired airflow rate, ranging from 50 to 100 cfm.

Features & Benefits

- Totally enclosed brushless electronically commutated (EC) motor
- Efficient operation at two configurable airflow levels
- Whisper-quiet sones as low as 0.3
- Low profile grille with plug & play motion sensor
- Built-in humidity sensor and time delay
- Toggle-switch selection for maximum desired airflow
- Maximum airflow ranging from 50 to 100 cfm
- Continuous low airflow operation, adjustable from 30 cfm to maximum or OFF
- Corrosion resistant 26 GA galvanized steel housing
- Removable blower assembly
- Non-metallic collar with built-in backdraft damper
- Permanently lubricated motor
- Automatic reset thermal overload protection
- ETL listed for use over a tub/shower enclosure with GFCI circuit
- HVI and ENERGY STAR® certified

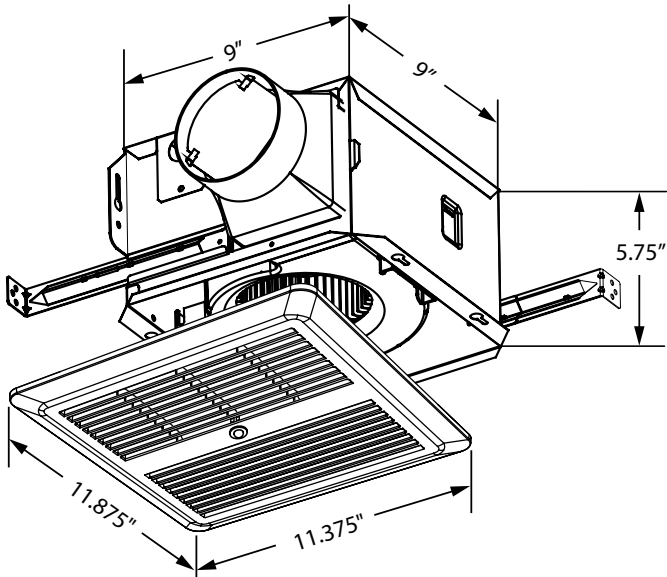
Accessories & Controls ~ pages 22-23

The TF100-EC fan can be configured to operate continuously at a low airflow rate to improve indoor air quality (IAQ). The fan boosts automatically to a maximum desired airflow when environmental conditions change.



TF100-EC fan has been designated as one of the Most Efficient ENERGY STAR certified products in 2025.

Products that are recognized as the Most Efficient of ENERGY STAR in 2025 prevent greenhouse gas emissions by meeting rigorous energy efficiency performance levels set by the U.S. Environmental Protection Agency.



| MODEL | PERFORMANCE | | | | | |
|----------|-------------|----------------|-----------------|-------|-------|-----------------|
| | SPEED | CFM 0.1" SP | CFM 0.25" SP | SONES | WATTS | POWER SUPPLY |
| TF100-EC | Low | 50 | 46 | 0.3 | 3.4 | 120V |
| | Medium | 80 | 77 | 0.5 | 6.1 | 60 Hz |
| | High | 100 | 95 | 1.0 | 9.7 | 1 Phase |

SONES AND WATTS ARE SHOWN AT 0.1" SP

| DIMENSIONS IN INCHES | | | | | |
|----------------------|-----------------------|--------------|---|------|------------------|
| DUCT DIA. | GRILLE SIZE | HOUSING SIZE | | | SHIP WT (lbs) |
| | | L | W | H | |
| 4" | 11.875 x 11.375 | 9 | 9 | 5.75 | 5.0 |

DO NOT USE FOR CONSTRUCTION
CONSULT FACTORY FOR CERTIFIED PRINTS



TF140-EC TRANQUIL BATHROOM FAN



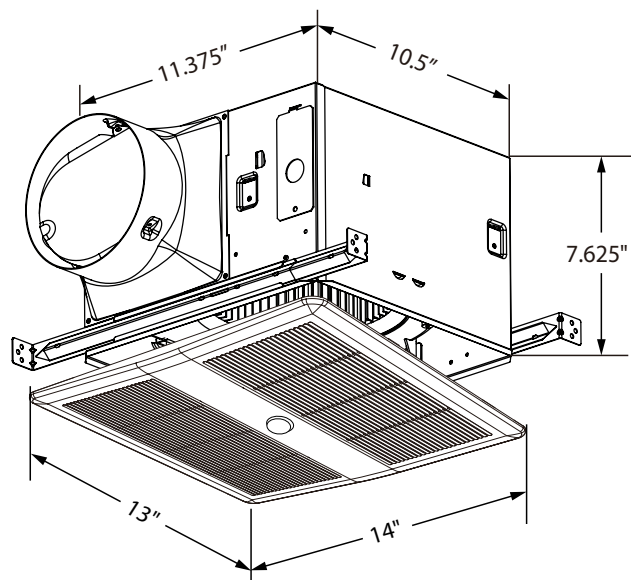
The TF140-EC bathroom fan features an electronically commutated (EC) motor that provides superior ventilation and efficient performance. Toggle-switch positioning determines the maximum desired airflow rate, ranging from 80 to 140 cfm.

Features & Benefits

- Totally enclosed brushless electronically commutated (EC) motor
- Efficient operation at two configurable airflow levels
- Whisper-quiet sones as low as 0.3
- Low profile grille with plug & play motion sensor
- Built-in humidity sensor and time delay
- Toggle-switch selection for maximum desired airflow
- Maximum airflow from 80 to 140 cfm
- Continuous low airflow operation, adjustable from 30 cfm to maximum or OFF
- Corrosion resistant 26 GA galvanized steel housing
- Double hanger mounting brackets adjust up to 24" span
- Non-metallic collar with built-in backdraft damper
- Permanently lubricated motor
- Automatic reset thermal overload protection
- ETL listed for use over a tub/shower enclosure with GFCI circuit
- HVI and ENERGY STAR® certified

Accessories & Controls ~ pages 22-23

The TF140-EC fan can be configured to operate continuously at a low airflow rate to improve indoor air quality (IAQ). The fan boosts automatically to a maximum desired airflow when environmental conditions change.



| PERFORMANCE | | | | | | |
|-------------|--------|---------|----------|-------|-------|--------------|
| MODEL | SPEED | CFM | CFM | SONES | WATTS | POWER SUPPLY |
| | | 0.1" SP | 0.25" SP | | | |
| TF140-EC | Low | 80 | 80 | 0.3 | 5.6 | 120V |
| | Medium | 110 | 109 | 0.3 | 8.5 | 60 Hz |
| | High | 140 | 137 | 0.4 | 13.0 | 1 Phase |

SONES AND WATTS ARE RATED AT 0.1" SP

| DIMENSIONS IN INCHES | | | | | |
|----------------------|-------------|--------------|------|-------|---------------|
| DUCT DIA. | GRILLE SIZE | HOUSING SIZE | | | SHIP WT (lbs) |
| | | L | W | H | |
| 6" | 13 x 14 | 11.375 | 10.5 | 7.625 | 5.0 |

DO NOT USE FOR CONSTRUCTION
CONSULT FACTORY FOR CERTIFIED PRINTS



TF140-DC TRANQUIL BATHROOM FAN



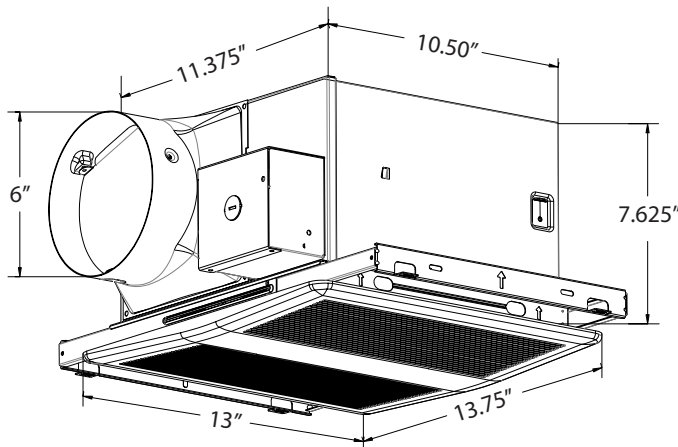
With its high efficiency DC motor, the TF140-DC bathroom fan offers whisper-quiet exhaust. Toggle-switch positioning determines the maximum desired airflow rate, ranging from 90 to 140 cfm.

Features & Benefits

- Efficient DC motor
- Multi-speed fan
- Whisper-quiet, under 1 sone
- Continuous operation with boost function
- Toggle-switch positioning for maximum desired airflow
- Airflow ranging from 90 to 140 cfm
- Superior ventilation and efficient performance
- Clean, simple grille design
- Galvanized steel housing with mounting frame
- Easy installation to joist
- Built-in backdraft damper
- 120V, 60 Hz, single phase operation
- Automatic reset thermal overload protection
- Fits 6" duct

Accessories & Controls ~ pages 22-23

The versatile TF140-DC fan can be installed as a traditional bathroom fan. Alternatively, it can be configured to operate continuously at a low airflow rate to improve indoor air quality (IAQ).



| MODEL | PERFORMANCE | | | |
|----------|----------------|-------|-------|--------------------------|
| | CFM 0.1" SP | SONES | WATTS | POWER SUPPLY |
| TF140-DC | 90 | 0.5 | 8.1 | 120V 60 Hz 1 Phase |
| | 110 | 0.9 | 10.3 | |
| | 120 | 1.2 | 12.2 | |
| | 140 | 1.5 | 15.6 | |

| DIMENSIONS IN INCHES | | | | | |
|----------------------|----------------|--------------|------|-------|------------------|
| DUCT DIA. | GRILLE SIZE | HOUSING SIZE | | | SHIP WT (lbs) |
| L | W | H | | | |
| 6" | 13 x 13.75 | 11.375 | 10.5 | 7.625 | 5.0 |

DO NOT USE FOR CONSTRUCTION
CONSULT FACTORY FOR CERTIFIED PRINTS



TF TRANQUIL BATHROOM FANS

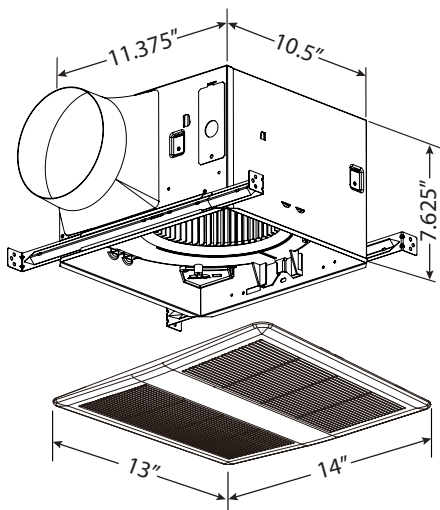


TF bathroom fans are available in lighted, non-lighted and low-profile versions, providing superior ventilation and efficient performance suitable for all interiors. The built-in damper prevents a backdraft when the fan is not operating.

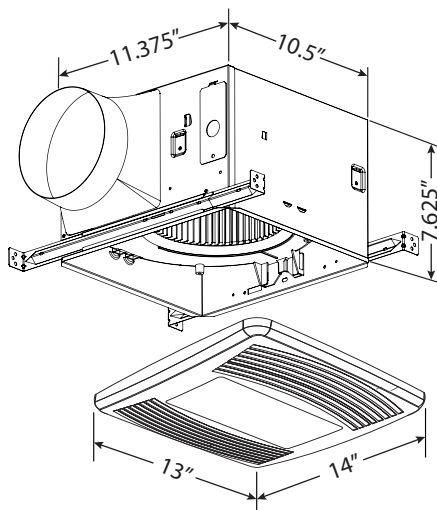
Features & Benefits

- Whisper-quiet, 2.0 sones or less
- Available styles:
 - Lighted (TF80L & TF110L)
 - Non-lighted (TF80, TF110, TF150, TF200 & TF300)
 - Low-profile, 3-3/8" depth (TF80N & TF100N)
- May be mounted in a wall (low-profile models only) or ceiling
- Double hanger mounting brackets adjust up to 24" span
- Durable polymeric resin grille for long life
- 26 GA galvanized steel housing
- Built-in backdraft damper
- Efficient AC motor
- 120V, 60 Hz operation
- Automatic reset thermal overload protection
- Max 26W GU24 fluorescent light
- ETL listed for use over a tub/shower enclosure with GFCI circuit

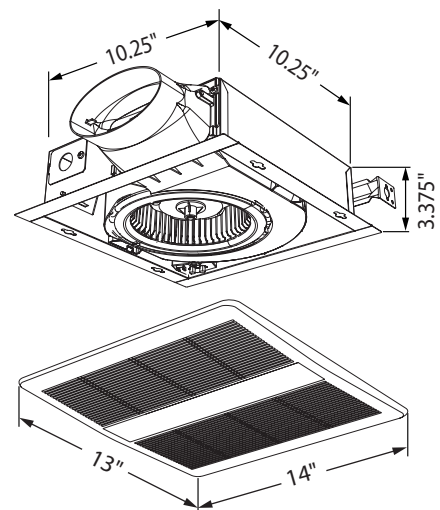
Accessories & Controls ~ pages 22-23



(Non-Lighted)



(Lighted)



(Low Profile)

| | | PERFORMANCE | | | | | | | |
|-------------|--------|----------------|-----------------|-------|-------|--------------|------------------|---------------------------------|--------------------------|
| FAN STYLE | MODEL | CFM 0.1" SP | CFM 0.25" SP | SONES | WATTS | DUCT DIA. | SHIP WT (lbs) | ENERGY STAR® & HVI CERTIFIED | APPLICATION |
| LIGHTED | TF80L | 80 | 58 | 0.4 | 22.8 | 4" & 6" | 5.0 | No | Residential |
| | TF110L | 110 | 100 | 0.9 | 28.0 | 4" & 6" | 5.0 | No | Residential |
| NON-LIGHTED | TF80 | 80 | 58 | 0.4 | 22.8 | 4" & 6" | 5.0 | No | Residential |
| | TF110 | 110 | 100 | 0.9 | 28.0 | 4" & 6" | 5.0 | No | Residential |
| | TF150 | 150 | 130 | 0.9 | 35.0 | 6" | 5.0 | No | Residential / Commercial |
| | TF200 | 200 | 188 | 2.0 | 24.0 | 6" | 5.0 | No | Commercial |
| | TF300 | 290 | 268 | 4.0 | 52.0 | 6" | 5.0 | No | Commercial |
| LOW-PROFILE | TF80N | 80 | 62 | 1.2 | 25.9 | 4" Oval | 5.0 | Yes | Residential |
| | TF100N | 100 | 86 | 2.0 | 24.6 | 4" Oval | 5.0 | Yes | Residential |

SONES ARE RATED AT 0.1" SP

DO NOT USE FOR CONSTRUCTION
CONSULT FACTORY FOR CERTIFIED PRINTS



ENERGY STAR® & HVI Certified only models TF80N & TF100N

TF400 TRANQUIL BATHROOM FAN

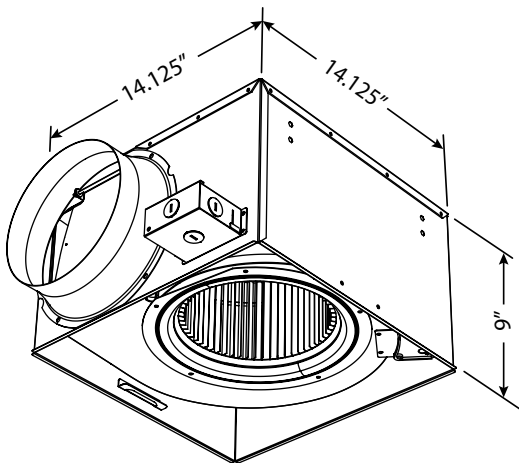
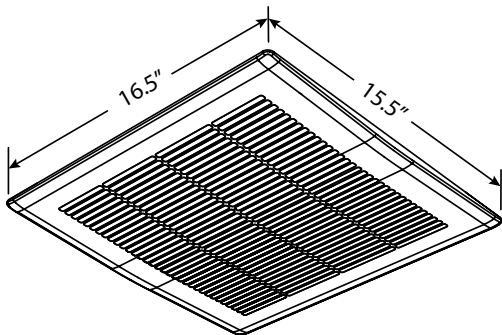


The TF400 bathroom fan offers higher air delivery for commercial applications. The efficient DC motor is designed for continuous and quiet operation.

Features & Benefits

- Totally enclosed brushless DC motor
- Ceiling mount design for commercial applications
- Superior ventilation and efficient performance
- Corrosion resistant 26 GA galvanized steel housing
- Durable polymeric resin grille for long life
- Easy installation
- 4-point mounting capability
- Built-in backdraft damper
- 120V, 60 Hz operation
- Permanently lubricated motor
- Automatic reset thermal overload protection
- ETL listed for use over a tub/shower enclosure with GFCI circuit
- Fits 8" duct

Accessories & Controls ~ pages 22-23



| MODEL | PERFORMANCE | | | |
|-------|----------------|-----------------|-------|-------|
| | CFM 0.1" SP | CFM 0.25" SP | SONES | WATTS |
| TF400 | 400 | 390 | 3.0 | 40.0 |

| DIMENSIONS IN INCHES | | | | | |
|----------------------|----------------|--------------|--------|-----|------------------|
| DUCT DIA. | GRILLE SIZE | HOUSING SIZE | | | SHIP WT (lbs) |
| | | L | W | H | |
| 8" | 15.5 x 16.5 | 14.125 | 14.125 | 9.0 | 14 |

DO NOT USE FOR CONSTRUCTION
CONSULT FACTORY FOR CERTIFIED PRINTS



CEF CEILING EXHAUST FANS



CEF ceiling exhaust fans provide the perfect solution for hotels, public restrooms, or any commercial spaces that require continuous ventilation. These ceiling or in-line mount, exhaust fans feature a low profile grille and an integral backdraft damper.

Features & Benefits

- Acoustically insulated galvanized steel housing
- Low profile grille
- Integral backdraft damper
- Removable blower assembly
- Horizontal (standard) or vertical discharge
- 8 position mounting brackets
- Anti-vibration mounts isolate motor for smooth operation
- Thermally protected fan motor

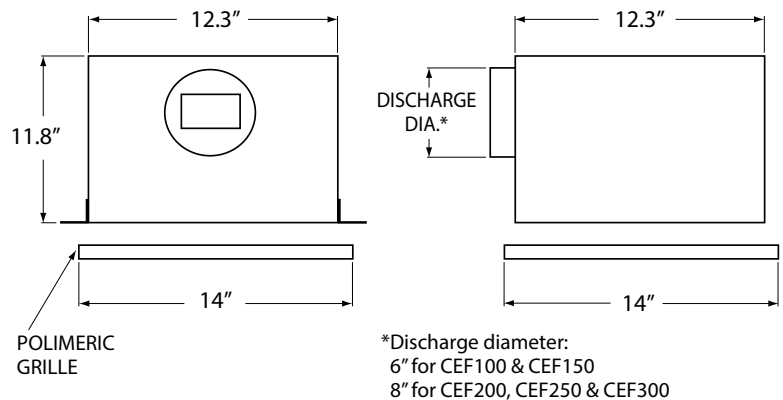
Accessories / Options

- Variable speed control
- Radiation damper
- Time delay switch
- Roof and wall caps
- Square to round discharge transition (CEF400 & larger)

Models CEF100 Thru CEF300

| MODEL | WATTS | RPM | CFM 0.125 SP | DUCT DIA. | WT (lbs) |
|--------|-------|---------|-----------------|--------------|-------------|
| CEF100 | 88 | 640/650 | 109 | 6" | 23 |
| CEF150 | 96 | 710/750 | 157 | 6" | 23 |
| CEF200 | 124 | 740/760 | 210 | 8" | 23 |
| CEF250 | 160 | 830/860 | 259 | 8" | 23 |
| CEF300 | 204 | 935/950 | 308 | 8" | 24 |

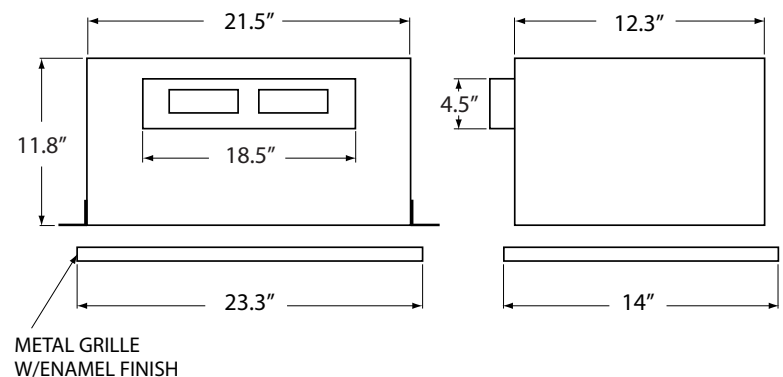
RPM SHOWN IS HORIZONTAL / VERTICAL DISCHARGE AT 0.125".



Models CEF400 & CEF700

| MODEL | WATTS | RPM | CFM 0.125 SP | DUCT DIA. | WT (lbs) |
|--------|-------|---------|-----------------|--------------|-------------|
| CEF400 | 137 | 735/755 | 434 | 18.5" x 4.5" | 34 |
| CEF700 | 298 | 960/985 | 701 | 18.5" x 4.5" | 34 |

RPM SHOWN IS HORIZONTAL / VERTICAL DISCHARGE AT 0.125".



VISIT CONTINENTALFAN.COM FOR COMPLETE PERFORMANCE DATA

DO NOT USE FOR CONSTRUCTION
CONSULT FACTORY FOR CERTIFIED PRINTS

CX1000 PORTABLE AIR PURIFIER



Using patented technology, CX1000 portable air purifier removes airborne particles, neutralize odors and chemicals, and render germs, viruses and bacteria harmless. Ideal applications include homes, schools, day cares, offices, beauty salons, and more.

Features & Benefits

- 1,000 square feet of complete air purification
- Create a cleaner environment and promote health and wellness
- High-intensity, UVC germicidal lamp
- Photocatalytic Oxidation (PCO) process neutralizes odors and toxic VOCs
- Easy maintenance
- Built-in electronic service lights
- Electronic sensors constantly monitor air quality
- Warning lights signal presence of toxic chemicals and fumes
- Ozone free
- 2-year warranty (excludes lamp and filters)

Five-stage process to purify indoor air:

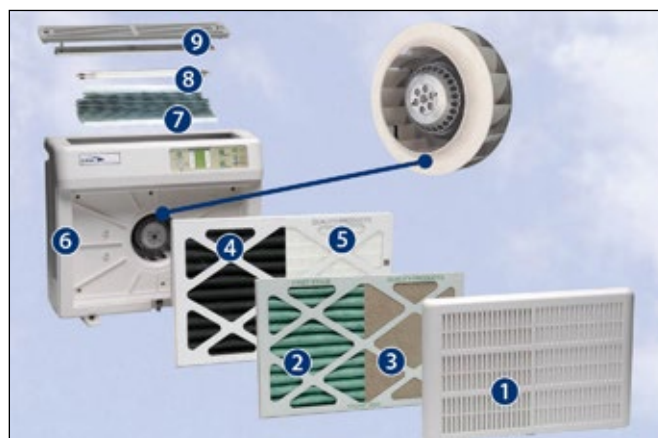
1. Treated pre-filter - removes particles to 5 microns
2. Activated carbon filters (2) - reduce toxic chemicals and gases
3. Hospital grade HEPA filter - purges allergens to 0.3 microns
4. Reactive catalyst - neutralizes VOCs, toxic chemicals, and odors
5. UVC light - renders germs, viruses, and bacteria harmless

| MODEL | DIM. (in.) | MAX AIRFLOW (cfm) | VOLTAGE (V) | POWER (watts) | LAMP (watts) | UV RANGE (nm) | LAMP INTENSITY (μW/cm ² @Surface) | WT (lbs) |
|--------|-----------------------|----------------------|----------------------------------|------------------|-------------------------------------|------------------|---|-------------|
| CX1000 | 21.5 x 18 x 8 | 200 | 1/120/60 | 100 | 8 | 254 | 7434 | 23 |
| | APPLICATION (sq. ft.) | | SERVICE INTERVALS | | WARRANTY | | CATALYST | |
| | 1000 (auto mode) | | UVC lamp 1 year; filters 2 years | | 2 year (excluding lamp and filters) | | Metal Oxides | |

SERVICE INTERVALS ARE SUBJECTIVE TIMES AND MAY FLUCTUATE BASED ON ENVIRONMENT.

Construction

1. Air inlet grille with safety lock
2. 5.0 micron pre-filter
3. 1st stage gas adsorption layer (activated carbon)
4. 2nd stage gas adsorption layer (activated carbon)
5. 0.3 micron hospital grade HEPA filter
6. High impact ABS plastic
7. Photo-catalytic converter
8. High output germicidal UVC lamp
9. Air outlet grille with safety lock

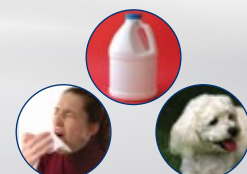


CX Air Purifiers:

- Create a cleaner environment
- Ease breathing problems
- Alleviate fatigue and headaches
- Promote health and wellness



- Cut dust and cleaning requirements
- Reduce asthma, hay fever and sinus problems
- Control pet odors and dander
- Relieve sore throats, runny noses and sneezing



DAMPERS

BDD BACKDRAFT DAMPERS



BDD backdraft dampers provide an economical solution to troublesome backdrafts. These premium quality backdraft dampers feature aluminum butterfly damper blades. They are available in either spring loaded or gravity operated designs.

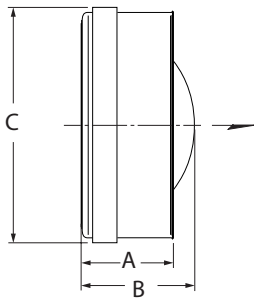
Spring Loaded Dampers

- Neoprene damper seal to minimize air leakage
- Steel housing, aluminum butterfly damper blades
- Gasket designed to withstand temperatures from -22 °F to 180 °F
- Requires from 0.04 to 0.08 in. wg pressure to open
- Simple installation in any position - entire assembly inserts into duct
- Exterior foam gasket assures a tight seal against duct
- 4", 5", 6" & 8" sizes include stamped metal sleeve with center pin / post designs
- 10" & 12" sizes include rolled metal sleeve with center post design

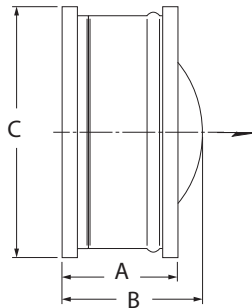
Gravity Operated Dampers

- Low air leakage design
- Galvanized steel housing
- Aluminum butterfly damper blades
- Gravity operated closure
- Install in horizontal or vertical (upblast only) position
- Suitable for supply or exhaust applications
- Available in 7", 14" & 16" sizes

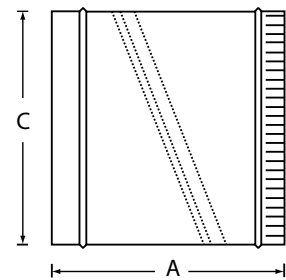
SPRING LOADED DAMPERS 4", 5", 6" & 8"



SPRING LOADED DAMPERS 10" & 12"

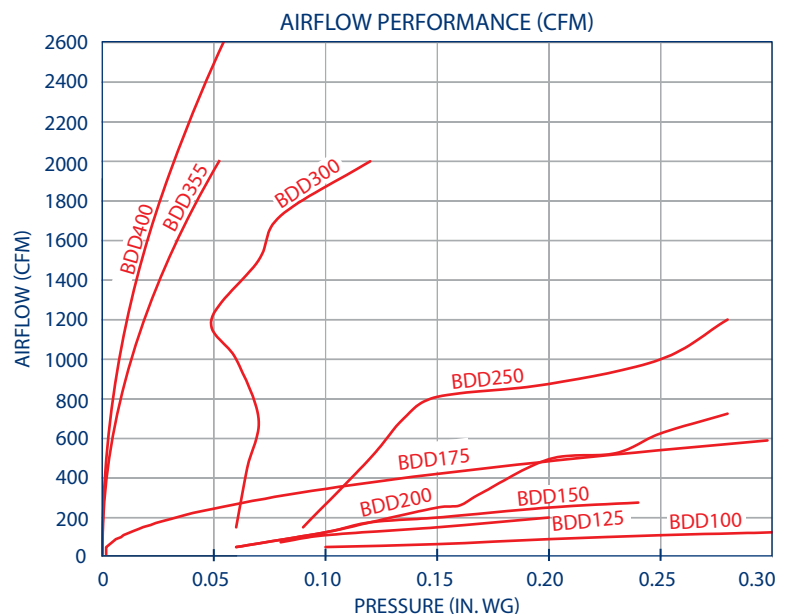


GRAVITY OPERATED DAMPERS 7", 14" & 16"



| DIMENSIONS IN INCHES | | | | |
|---------------------------------|------|-----|----------------|-------|
| MODEL | A | B | C (NOMINAL) | GAUGE |
| SPRING LOADED DAMPERS | | | | |
| BDD100 | 1.8 | 2.0 | 4 | 20 |
| BDD125 | 2.0 | 2.5 | 5 | 20 |
| BDD150 | 2.5 | 3.0 | 6 | 20 |
| BDD200 | 2.8 | 3.8 | 8 | 20 |
| BDD250 | 4.8 | 6.0 | 10 | 20 |
| BDD300 | 6.3 | 6.8 | 12 | 20 |
| GRAVITY OPERATED DAMPERS | | | | |
| BDD175 | 7.0 | - | 7 | 28 |
| BDD355 | 12.0 | - | 14 | 24 |
| BDD400 | 14.0 | - | 16 | 22 |

DO NOT USE FOR CONSTRUCTION
CONSULT FACTORY FOR CERTIFIED PRINTS



IRIS DAMPERS



The IRIS damper is a brilliantly simple solution for fast and exact measurement, balance and control of airflow. It is ideal for supply and exhaust tracking control, individual comfort control, and any space requiring accurate airflow regulation.

Features & Benefits

- Precise airflow measurement, reduced field labor time
- Single station measurement and control
- Accurate air balancing to +/- 5% in straight duct
- Compact design, superior performance
- Fitted EPDM gasket for airtight mounting
- Fully retractable blades for duct cleaning
- Ideal for office buildings, pharmaceuticals, clean rooms and laboratories
- Available in 4" to 32" sizes; capacities to 20,000 cfm
- Max operating temperature:
 - 180 °F continuous
 - 250 °F intermittent

IRIS Damper

- Hot dipped galvanized steel construction

IRIS-S Damper

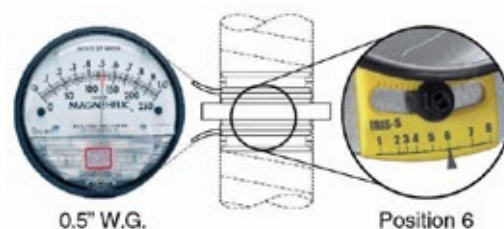
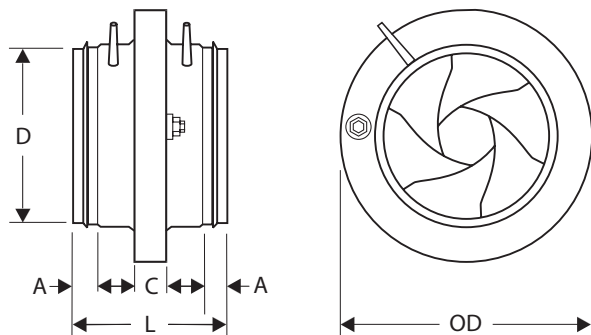
- AISI 316 stainless steel construction
- Prolonged excellence in extreme conditions
- Ideal for corrosive environments

Positive Seal Construction (Optional)

Some applications may require a fully closed damper. For those requiring a 100% shutoff, a positive seal option is available on sizes 4" through 12", in both galvanized and stainless steel IRIS dampers.

Simple Operation

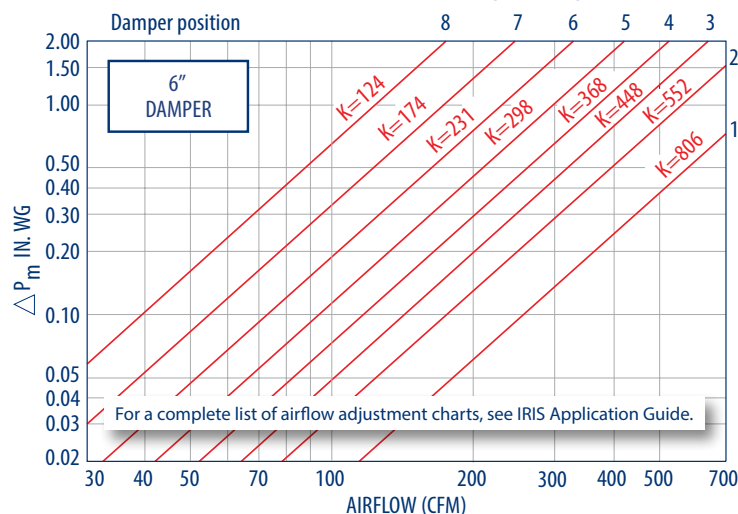
Using a pressure gauge and a damper's Airflow Adjustment Chart, desired airflow in a duct can be attained by simply turning the damper adjustment nut until the required pressure drop is reached.



| MODEL | DIMENSIONS IN INCHES | | | | | WT (lbs) |
|--------------------|----------------------|-----|------|------|------|----------|
| | A | C | D | L | OD | |
| IRIS-04, IRIS-S-04 | 1.2 | 0.6 | 3.9 | 4.6 | 6.5 | 1.1 |
| IRIS-05, IRIS-S-05 | 1.2 | 0.6 | 4.9 | 4.6 | 7.4 | 1.5 |
| IRIS-06, IRIS-S-06 | 1.2 | 0.6 | 5.9 | 4.6 | 9.1 | 2.0 |
| IRIS-08, IRIS-S-08 | 1.2 | 0.6 | 7.8 | 4.6 | 11.2 | 3.1 |
| IRIS-10, IRIS-S-10 | 1.6 | 0.7 | 9.8 | 5.3 | 13.2 | 4.6 |
| IRIS-12, IRIS-S-12 | 1.6 | 0.7 | 11.8 | 6.1 | 16.1 | 7.7 |
| IRIS-16, IRIS-S-16 | 2.4 | 0.8 | 15.7 | 7.5 | 20.7 | 14.1 |
| IRIS-20, IRIS-S-20 | 2.0 | 0.8 | 19.6 | 6.7 | 25.8 | 21.2 |
| IRIS-25, IRIS-S-25 | 2.0 | 0.9 | 24.7 | 6.7 | 32.1 | 34.4 |
| IRIS-32, IRIS-S-32 | 3.9 | 0.9 | 31.4 | 10.6 | 40.0 | 55.1 |

DO NOT USE FOR CONSTRUCTION
CONSULT FACTORY FOR CERTIFIED PRINTS

AIRFLOW ADJUSTMENT CHART (TYPICAL)



ACCESSORIES, GRILLES & CONTROLS

ACCESSORIES

Sound Attenuators

- ☐ SA100 Sound Attenuator, 4" Duct
- ☐ SA150 Sound Attenuator, 6" Duct
- ☐ SA200 Sound Attenuator, 8" Duct
- ☐ SA250 Sound Attenuator, 10" Duct
- ☐ SA300 Sound Attenuator, 12.4" Duct
- ☐ SA400 Sound Attenuator, 16" Duct



SA sound attenuators reduce fan noise traveling along ventilation ducts. Ideal for either supply or exhaust ducts.

Duct Reducers/Increasers

- ☐ DRI-04-03 Duct Reducer/Increaser, 4"-3" Duct, Plastic
- ☐ DRI-06-04 Duct Reducer/Increaser, 6"-4" Duct, Galvanized
- ☐ DRI-08-06 Duct Reducer/Increaser, 8"-6" Duct, Galvanized
- ☐ DRI-10-08 Duct Reducer/Increaser, 10"-8" Duct, Galvanized
- ☐ DRI-12-10 Duct Reducer/Increaser, 12"-10" Duct, Galvanized
- ☐ DRI-14-12 Duct Reducer/Increaser, 14"-12" Duct, Galvanized



DRI duct reducers/increasers are used to transition a duct from a larger or smaller size. Available in 28 Ga.

Wye Fittings

- ☐ WYE-04 Y-Fitting, 4"x4"x4" Duct
- ☐ WYE-06 Y-Fitting, 6"x6"x6" Duct
- ☐ WYE-08 Y-Fitting, 8"x8"x8" Duct



WYE fittings provide an airtight branch fitting. The crimp and bead edging ensures an easy connection.

Gear Clamps (for Flexible Duct)

- ☐ GC150 Gear Clamps for 4" - 6" Duct, Stainless Steel
- ☐ GC200 Gear Clamps for 5.5" - 8.5" Duct, Stainless Steel



Stainless steel gear clamps easily connect a duct fan to flexible insulated duct and other auxiliary pieces.

Flexible Insulated Duct

- ☐ FLM100 Flexible Insulated 4" Duct - 12.5'
- ☐ FLM100-25 Flexible Insulated 4" Duct - 25'
- ☐ FLM125 Flexible Insulated 5" Duct - 25'
- ☐ FLM150 Flexible Insulated 6" Duct - 25'
- ☐ FLM200 Flexible Insulated 8" Duct - 25'
- ☐ FLM250 Flexible Insulated 10" Duct - 25'
- ☐ FLM300 Flexible Insulated 12" Duct - 25'



UL-181 and ULC S-110 M Class 1 Air Duct, wrapped with R4.2 insulation, 2-ply black polyester laminated inner core.

Mounting Clamps (for Rigid Duct)

- ☐ MC100 Mounting Clamps for Rigid 4" Duct (2pc)
- ☐ MC125 Mounting Clamps for Rigid 5" Duct (2pc)
- ☐ MC150 Mounting Clamps for Rigid 6" Duct (2pc)
- ☐ MC200 Mounting Clamps for Rigid 8" Duct (2pc)
- ☐ MC250 Mounting Clamps for Rigid 10" Duct (2pc)
- ☐ MC300 Mounting Clamps for Rigid 12" Duct (2pc)
- ☐ MC355 Mounting Clamps for Rigid 14" Duct (2pc)



MC mounting clamps are designed for use with rigid duct. The foam neoprene layer creates an air tight installation.

Roof Caps

- ☐ RC100 Roof Cap, 4" Duct, Black Plastic
- ☐ RC150 Roof Cap, 6" Duct, Black Plastic
- ☐ RC200 Roof Cap, 8" Duct, Black Plastic



Black plastic roof caps include damper, screen, and collar.

Wall Caps

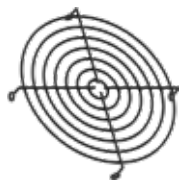
- ☐ WC100 Wall Cap, 4" Duct, Aluminum, Reducer 4" - 3"
- ☐ WC150 Wall Cap, 6" Duct, Aluminum
- ☐ WC200 Wall Cap, 8" Duct, Aluminum



Aluminum wall caps include spring controlled damper.

Guards

- ☐ PG100 Guard, 4" Duct
- ☐ PG125 Guard, 5" Duct
- ☐ PG150 Guard, 6" Duct
- ☐ PG200 Guard, 8" Duct
- ☐ PG250 Guard, 10" Duct
- ☐ PG300 Guard, 12" Duct



Utilize a PG guard as a grille, or mount it directly on the outlet/inlet of a fan to allow for a safe installation.

Louvered Shutters (w/Tail Piece)

- ☐ LS100-4W Louvered Shutter, 4" Duct
- ☐ LS150-6W Louvered Shutter, 6" Duct



Louvered construction prevents wind and rain from entering the vent.

Lint Trap

- ☐ LT100 Lint Trap for 4" Dryer Duct



The LT100 Lint Trap offers a simple solution for reducing maintenance associated with dryer exhaust ducts.

GRILLES

Adjustable Ventilation Grilles

- ☐ GR100 Adjustable Grille 4", Collar
- ☐ GR150 Adjustable Grille 6", Collar
- ☐ GR200 Adjustable Grille 8", Collar
- ☐ GR100-6PK Adjustable Grille 4", Collar - 6 pcs
- ☐ GR150-6PK Adjustable Grille 6", Collar - 6 pcs

The fully adjustable GR ventilation grilles are designed for ceiling or wall applications.



AeroGrille Ventilation Grilles

- ☐ AG150 AeroGrille 6"
- ☐ AG150-C AeroGrille 6", Collar
- ☐ AG150-CD AeroGrille 6", Collar, Damper

AeroGrilles are designed for use with either in-line or external mount duct fans.



CONTROLS

Digital Fan Control

- ☐ DFC120V Digital Fan Control 5 Modes of Operation - 120V

DFC uses smart technology to automatically calculate the airflow required to achieve acceptable IAQ.



Occupancy Sensor

- ☐ SOS125V Occupancy Sensor - 5 amp

Single relay occupancy sensor features 180 degree field of view with coverage up to 900 sq. ft.



Variable Speed Controls (Solid State)

- ☐ VSC3 Knob-Style - 115V, 3 amp - 3 Wire
- ☐ VSC5 Knob-Style - 115V, 5 amp - 3 Wire
- ☐ VSC5-230 Knob-Style - 230V, 5 amp - 4 Wire
- ☐ VSC10 Knob-Style - 115V, 10 amp - 3 Wire
- ☐ DVSC5 Decora Slide - 115V, 5 amp

Variable speed controls are designed for AC motors. Not for use with any model of TF Bathroom Fan.



Thermostat

- ☐ TST120V Line Voltage Thermostat, 120V

TST120V thermostat is suitable for direct connection with any resistance heating element or unit heater.



Current Sensor (Solid State)

- ☐ CS120AF Current Sensor, 120V, Solid State

The current sensor detects AC current. It is ideal for ON/OFF sensing of remote equipment.



Digital Timers

- ☐ DT60 Digital Timer 10 - 20 - 30 - 60 Minutes

Time control auto shut off, in preset intervals, allows for proper ventilation and energy savings.



Pressure Switch (w/Time Delay)

- ☐ PST120V Pressure Switch w/Time Delay

PST120V is an airflow proving switch designed for HVAC or energy management applications.



Spring Wound Timer

- ☐ CT100V Spring Wound Timer 0 - 1 Hour

CT timer provides energy savings by limiting the "on-time" of the fan. Face plate not included.



Auto Transformer

- ☐ TF120V Auto Transformer - 90/60V

TF auto transformer allows for voltage to be regulated to 60V and 90V increments.



On/Off Switch (w/Pilot Light)

- ☐ PLS120V ON/OFF Switch w/Pilot Light

The neon light is ON when the switch is in the ON position. Face plate not included.



DESTRATIFICATION FANS

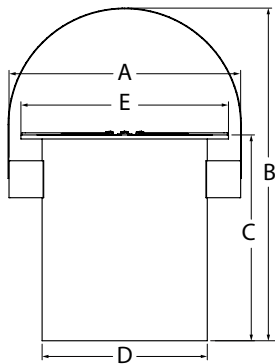


DSF DESTRATIFICATION FANS

Features & Benefits

- Reduce hot and cold spots through the mixing of air in large spaces
- Lower energy costs, increased comfort
- Ideal for any building with ceilings 15' or higher
- Breaks up stratification layers
- Powerful, axial flow fan
- External rotor motor design results in superior motor cooling
- Speed controllable using optional solid state speed control
- Permanently lubricated ball bearing motors for maintenance-free operation
- Automatic reset, thermal overload protection
- 120V, 60 Hz operation
- Steel housing with corrosion resistant finish
- Gripple fasteners supplied for safe mounting
- Rotating mounting bracket permits mounting at any angle
- Maximum permissible ambient temperature: 140 °F
- Capacities up to 1460 cfm
- Available in 10", 12" & 14" fan sizes

DSF destratification fans force heated or cooled air down to floor level, eliminate temperature layers in the ceiling space, and create a more comfortable environment inside a building. The net result is energy savings, along with maximizing the efficiency of an HVAC system.



How Do I Determine How Many Fans I Need?

Air circulation should occur once or twice per hour to maintain a healthy building environment. Select the fan cfm based on the following ceiling height recommendations:

- 15 ft - 20 ft use 420 cfm fan or model DSF250
- 20 ft - 25 ft use 1055 cfm fan or model DSF300
- 25 ft - up use 1460 cfm fan or model DSF350

To determine the number of DSF fans for a given area, the following information is required:

- $(L \times W \times H) = \text{Size of room}$
- $\text{Size of room} / \text{cfm} / 60 = \text{Number of units}$

Example: a building is 125 ft long, 75 ft wide, and 20 ft high.

- $125 \times 75 \times 20 = 187,500 \text{ cu. ft}$
- $187,500 \text{ cu. ft} / 1055 \text{ cfm (DSF300 Fan)} / 60 = 3 \text{ DSF Fans (round to the nearest whole number)}$

| DIMENSIONS IN INCHES | | | | | |
|----------------------|------|------|------|------|------|
| MODEL | A | B | C | D | E |
| DSF250 | 15.2 | 20.2 | 15.2 | 10.2 | 13.4 |
| DSF300 | 17.3 | 23.9 | 17.9 | 12.2 | 15.4 |
| DSF350 | 19.2 | 27.3 | 20.3 | 14.2 | 17.4 |

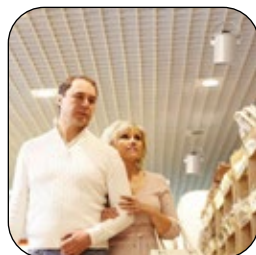
DO NOT USE FOR CONSTRUCTION

| PERFORMANCE | | | | | | | | | | | | | | |
|-------------|----------|------|-----------|--|------|-------|-------|-------|-------|-------|-------|-------|-------|-------|
| MAX WATTS | MAX AMPS | RPM | CFM 0" SP | AIR VELOCITY DEPENDING ON DISTANCE FROM DSF FAN, FPM | | | | | | | | | | |
| | | | | 3 ft | 6 ft | 10 ft | 13 ft | 15 ft | 20 ft | 23 ft | 25 ft | 30 ft | 33 ft | 35 ft |
| 60 | 0.51 | 1700 | 420 | 378 | 270 | 220 | 156 | 90 | 60 | 20 | - | - | - | - |
| 94 | 0.80 | 1675 | 1055 | 918 | 594 | 380 | 234 | 162 | 120 | 79 | 38 | 20 | - | - |
| 162 | 1.38 | 1685 | 1460 | 1100 | 756 | 760 | 468 | 324 | 300 | 217 | 169 | 120 | 59 | 19 |

CONSULT FACTORY FOR CERTIFIED PRINTS

DSF Fan Applications

- Gymnasiums
- Showrooms
- Warehouses
- Distribution centers
- Greenhouses
- Grocery stores
- Schools
- Cold storage
- Airport hangars
- Atriums



SEF, GEF & PEF WALL FANS



SEF, GEF & PEF wall fans are designed for through-the-wall general ventilation applications. These multi-speed, direct drive axial fans provide a compact, cost effective ventilation solution for factories, warehouses, equipment cooling, and more.

Features & Benefits

- Suitable for through-the-wall installation
- 2 or 3 speed operation, pull chain switch
- 120 VAC single phase 60 Hz operation
- UL/CSA approved motor
- Totally enclosed permanently lubricated motor
- External junction box
- Aluminum fan blades
- Galvanized frame (SEF model only)
- Painted steel panel (PEF model only)
- Plated steel spiral wire guard
- Mounts directly to inside wall
- Sizes: 10" to 30"
- Capacities to 3,950 cfm

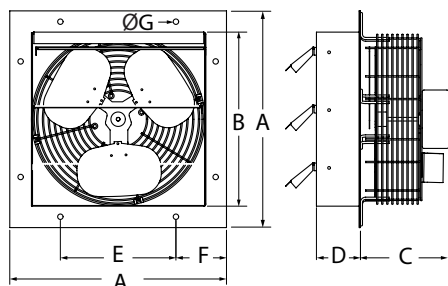
Accessories / Options

- WS wall shutter for models PEF and GEF
 - Aluminum blades; galvanized steel frame

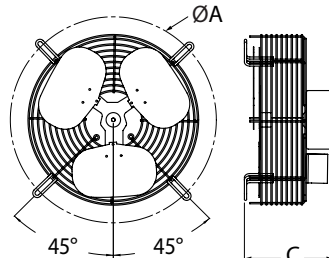
| FAN SIZE | MTR HP | AMPS (HIGH) | AIRFLOW PERFORMANCE (CFM) | | |
|----------|--------|-------------|---------------------------|--------|------|
| | | | HIGH | MEDIUM | LOW |
| 10 | 1/2 | 1.0 | 680 | 540 | 460 |
| 12 | 1/2 | 1.1 | 825 | 710 | 560 |
| 14 | 3/8 | 2.0 | 1520 | 1400 | 1250 |
| 16 | 3/8 | 2.1 | 2100 | 1900 | 1700 |
| 18 | 3/8 | 2.2 | 2300 | 2100 | 1850 |
| 20 | 1/4 | 2.3 | 2925 | N/A | 2380 |
| 24 | 1/4 | 2.5 | 3400 | N/A | 2770 |
| 30 | 1/4 | 2.7 | 3950 | N/A | 3080 |



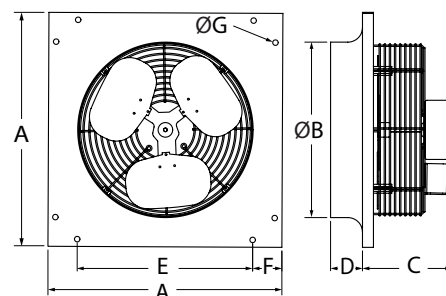
SEF Shutter Mount Fans



GEF Guard Mount Fans



PEF Panel Mount Fans



| DIMENSIONS IN INCHES | | | | | | | |
|----------------------|------|------|-----|-----|------|-----|----------|
| MODEL | A | B | C | D | E | F | WT (lbs) |
| SEF-10 | 13.0 | 10.1 | 6.1 | 2.5 | 6.0 | 3.5 | 11 |
| SEF-12 | 15.0 | 12.1 | 7.1 | 2.5 | 8.0 | 3.5 | 16 |
| SEF-14 | 17.0 | 14.1 | 7.9 | 2.5 | 10.0 | 3.5 | 17 |
| SEF-16 | 19.0 | 16.1 | 7.9 | 2.5 | 12.0 | 3.5 | 18 |
| SEF-18 | 21.0 | 18.1 | 7.6 | 2.5 | 14.0 | 3.5 | 25 |
| SEF-20 | 23.0 | 20.1 | 9.4 | 2.5 | 16.0 | 3.5 | 34 |
| SEF-24 | 27.0 | 24.1 | 9.9 | 2.5 | 20.0 | 3.5 | 47 |
| SEF-30 | 33.0 | 30.1 | 9.9 | 3.0 | 26.0 | 3.5 | 54 |

DO NOT USE FOR CONSTRUCTION

| DIMENSIONS IN INCHES | | | |
|----------------------|------|-----|----------|
| MODEL | A | C | WT (lbs) |
| GEF-10 | 14.1 | 5.8 | 11 |
| GEF-12 | 16.4 | 6.8 | 12 |
| GEF-14 | 18.2 | 7.6 | 17 |
| GEF-16 | 20.3 | 7.6 | 18 |
| GEF-18 | 22.6 | 7.3 | 19 |
| GEF-20 | 25.4 | 9.1 | 34 |
| GEF-24 | 29.0 | 9.6 | 38 |
| GEF-30 | 34.8 | 9.6 | 42 |

| DIMENSIONS IN INCHES | | | | | | | |
|----------------------|------|------|-----|-----|------|-----|----------|
| MODEL | A | B | C | D | E | F | WT (lbs) |
| PEF-10 | 12.5 | 10.3 | 6.1 | 1.0 | 3.8 | 4.4 | 11 |
| PEF-12 | 14.5 | 12.3 | 7.1 | 1.0 | 5.8 | 4.4 | 17 |
| PEF-14 | 17.0 | 14.3 | 7.9 | 1.5 | 8.3 | 4.4 | 17 |
| PEF-16 | 19.0 | 16.3 | 7.9 | 1.9 | 10.3 | 4.4 | 18 |
| PEF-18 | 21.0 | 18.1 | 7.6 | 1.8 | 12.3 | 4.4 | 26 |
| PEF-20 | 23.0 | 20.3 | 9.4 | 1.8 | 14.3 | 4.4 | 34 |
| PEF-24 | 28.0 | 24.3 | 9.9 | 2.5 | 18.3 | 4.4 | 48 |
| PEF-30 | 34.0 | 30.3 | 9.9 | 2.5 | 24.3 | 4.4 | 55 |

CONSULT FACTORY FOR CERTIFIED PRINTS

ROOF & WALL EXHAUST FANS

CUD DIRECT DRIVE UPBLAST FANS



CUD direct drive upblast exhaust fans are designed to discharge contaminated exhaust air away from roof surfaces and building walls. Available in UL762 Restaurant Exhaust Kits, CUD fans are suitable for commercial range hood exhaust and much more.

Features & Benefits

- Suitable for roof or wall mount
- Backward inclined, non-overloading wheels
- Spun aluminum housing for weather-resistant durability
- Fully enclosed drive compartment protects motor from airborne contaminants
- Fully ventilated motor cooling compartment for long motor life
- Quick release latches for easy access to motor compartment
- Blades and inlets fabricated from aluminum
- Variable speed control (standard on single phase units only)
- Disconnect switch
- Fully welded leak-proof grease drain (except for model CUD-10)
- 300 °F max. temperature rating (except for model CUD-10)
- Available in 115V 1 phase, contact factory for EC motors

Accessories / Options

- Gravity and motorized dampers
- Wall mount brackets
- Roof curb (vented or non-vented)
- Bird screen

Restaurant Exhaust Kits (UL762)

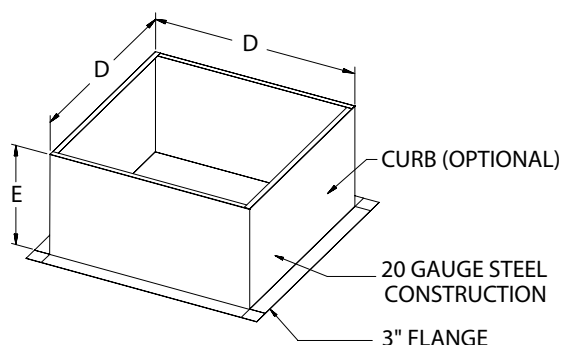
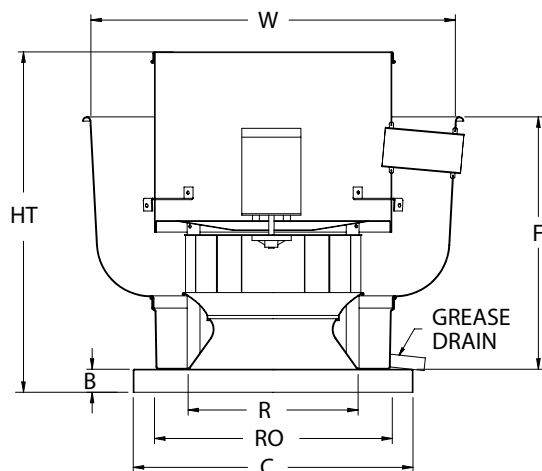
Kits include the following:

- Grease cup
- Grease pipe
- Down spout
- Hinge kit

Note: Restaurant exhaust (UL762) requires the use of a vented roof curb. Select 20" high roof curbs are available.

CUD Performance

- See page 27



DIMENSIONS IN INCHES

| MODEL | HT | W | B | C | D | E | F | R | RO | WT (lbs) | MANUFACTURE CODE |
|--------|------|------|---|------|------|----|------|------|----|----------|------------------|
| CUD-10 | 14.5 | 17.8 | 2 | 19.0 | 17.5 | 12 | 9.5 | 8.1 | 13 | 30 | DU10H |
| CUD-12 | 18.0 | 22.0 | 2 | 19.0 | 17.5 | 12 | 14.5 | 10.6 | 13 | 40 | DU12H |
| CUD-30 | 25.3 | 25.5 | 2 | 21.0 | 19.5 | 12 | 18.5 | 12.1 | 16 | 50 | DU30H |
| CUD-33 | 25.3 | 25.5 | 2 | 21.0 | 19.5 | 12 | 18.5 | 12.1 | 16 | 50 | DU33H |
| CUD-50 | 27.3 | 28.9 | 2 | 21.0 | 19.5 | 12 | 21.5 | 13.3 | 16 | 55 | DU50H |
| CUD-85 | 30.5 | 31.9 | 2 | 24.8 | 23.0 | 12 | 23.0 | 14.9 | 20 | 60 | DU85H |

DO NOT USE FOR CONSTRUCTION

CONSULT FACTORY FOR CERTIFIED PRINTS

CUD Direct Drive Upblast Fans

| PERFORMANCE | | | | | | | | | | | | | | | | | | | | | | | | | | | |
|-------------|------|-------|------|-----------|------|-----------|------|-----------|------|----------|------|-----------|------|-----------|------|-----------|------|-------|------|-----------|------|----------|------|-----------|------|----------|------|
| | | 0" SP | | 0.125" SP | | 0.250" SP | | 0.375" SP | | 0.50" SP | | 0.625" SP | | 0.750" SP | | 0.875" SP | | 1" SP | | 1.250" SP | | 1.50" SP | | 1.750" SP | | 2.00" SP | |
| MODEL | CFM | RPM | BHP | RPM | BHP | RPM | BHP | RPM | BHP | RPM | BHP | RPM | BHP | RPM | BHP | RPM | BHP | RPM | BHP | RPM | BHP | RPM | BHP | RPM | BHP | RPM | BHP |
| CUD-10 | 250 | 755 | 0.01 | 969 | 0.02 | 1152 | 0.03 | 1309 | 0.04 | 1453 | 0.06 | 1582 | 0.08 | | | | | | | | | | | | | | |
| | 300 | 906 | 0.01 | 1091 | 0.03 | 1255 | 0.04 | 1402 | 0.06 | 1531 | 0.07 | | | | | | | | | | | | | | | | |
| | 400 | 1205 | 0.04 | 1351 | 0.05 | 1481 | 0.07 | 1606 | 0.08 | | | | | | | | | | | | | | | | | | |
| | 500 | 1506 | 0.07 | | | | | | | | | | | | | | | | | | | | | | | | |
| CUD-12 | 300 | 509 | 0.01 | 746 | 0.02 | 940 | 0.04 | 1103 | 0.06 | 1245 | 0.08 | 1370 | 0.11 | 1478 | 0.14 | 1587 | 0.18 | | | | | | | | | | |
| | 500 | 846 | 0.03 | 1002 | 0.04 | 1142 | 0.07 | 1272 | 0.09 | 1393 | 0.12 | 1511 | 0.15 | 1613 | 0.18 | | | | | | | | | | | | |
| | 700 | 1184 | 0.07 | 1304 | 0.10 | 1408 | 0.12 | 1509 | 0.15 | 1606 | 0.18 | | | | | | | | | | | | | | | | |
| | 900 | 1520 | 0.15 | | | | | | | | | | | | | | | | | | | | | | | | |
| CUD-30 | 850 | 1071 | 0.05 | | | 1239 | 0.09 | | | 1396 | 0.14 | | | 1543 | 0.19 | | | | | | | | | | | | |
| | 1050 | 1321 | 0.10 | | | 1460 | 0.15 | | | 1593 | 0.20 | | | | | | | | | | | | | | | | |
| | 1250 | 1572 | 0.17 | | | | | | | | | | | | | | | | | | | | | | | | |
| CUD-33 | 700 | 857 | 0.04 | 974 | 0.06 | 1094 | 0.09 | 1199 | 0.12 | 1292 | 0.15 | 1375 | 0.18 | 1452 | 0.21 | 1525 | 0.24 | 1595 | 0.28 | | | | | | | | |
| | 900 | 1102 | 0.09 | 1189 | 0.11 | 1286 | 0.14 | 1380 | 0.18 | 1466 | 0.21 | 1544 | 0.25 | 1619 | 0.29 | | | | | | | | | | | | |
| | 1100 | 1346 | 0.17 | 1416 | 0.19 | 1493 | 0.23 | 1574 | 0.27 | | | | | | | | | | | | | | | | | | |
| | 1300 | 1591 | 0.27 | | | | | | | | | | | | | | | | | | | | | | | | |
| CUD-50 | 1200 | 915 | 0.09 | | | 1117 | 0.16 | | | 1277 | 0.24 | | | 1418 | 0.32 | | | 1548 | 0.42 | | | | | | | | |
| | 1500 | 1143 | 0.17 | | | 1315 | 0.26 | | | 1455 | 0.35 | | | 1582 | 0.45 | | | | | | | | | | | | |
| | 1800 | 1372 | 0.29 | | | 1519 | 0.40 | | | | | | | | | | | | | | | | | | | | |
| | 2100 | 1601 | 0.46 | | | | | | | | | | | | | | | | | | | | | | | | |
| CUD-85 | 1200 | 582 | 0.04 | | | 773 | 0.09 | | | 917 | 0.15 | | | 1041 | 0.22 | | | 1152 | 0.30 | 1254 | 0.39 | 1348 | 0.49 | 1435 | 0.59 | 1517 | 0.69 |
| | 1600 | 776 | 0.09 | | | 928 | 0.16 | | | 1057 | 0.23 | | | 1167 | 0.32 | | | 1267 | 0.40 | 1359 | 0.50 | 1445 | 0.60 | 1527 | 0.71 | | |
| | 2000 | 969 | 0.18 | | | 1093 | 0.26 | | | 1208 | 0.35 | | | 1309 | 0.45 | | | 1401 | 0.55 | 1485 | 0.65 | | | | | | |
| | 2400 | 1163 | 0.31 | | | 1266 | 0.40 | | | 1368 | 0.51 | | | 1461 | 0.62 | | | 1545 | 0.73 | | | | | | | | |
| | 2800 | 1357 | 0.50 | | | 1445 | 0.60 | | | 1533 | 0.72 | | | | | | | | | | | | | | | | |
| | 3200 | 1550 | 0.74 | | | | | | | | | | | | | | | | | | | | | | | | |

ROOF & WALL EXHAUST FANS

CDD DIRECT DRIVE DOWNBLAST FANS



CDD direct drive downblast fans provide quiet operation, within a weather-resistant spun aluminum housing. These commercial / light industrial fans are ideal for applications in schools, hospitals, office buildings, and much more.

Features & Benefits

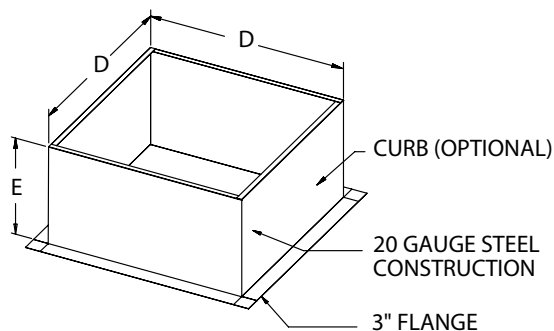
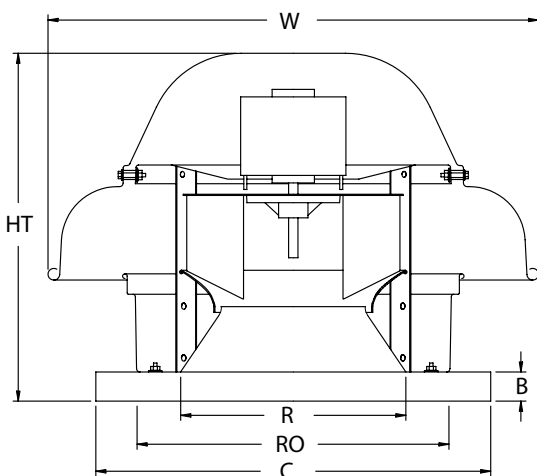
- Suitable for roof or wall mount
- Backward inclined, non-overloading wheels
- Spun aluminum housing for weather-resistant durability
- Blades and inlets fabricated from aluminum
- Bird screen
- Disconnect switch
- Variable speed control
- 110 °F max. temperature rating
- Available in 115V 1 phase, contact factory for EC motors
- Direct drive capacities to 3,300 cfm

Accessories / Options

- Gravity dampers
- Motorized dampers
- Wall mount brackets
- Roof curb

CDD Performance

- See page 29



| MODEL | DIMENSIONS IN INCHES | | | | | | | | | WT (lbs) | MANUFACTURE CODE |
|--------|----------------------|------|---|------|------|----|------|----|--|----------|------------------|
| | HT | W | B | C | D | E | R | RO | | | |
| CDD-10 | 14.5 | 20.8 | 2 | 19.0 | 17.5 | 12 | 8.1 | 13 | | 30 | DR10H |
| CDD-12 | 16.3 | 23.8 | 2 | 19.0 | 17.5 | 12 | 10.6 | 13 | | 35 | DR12H |
| CDD-30 | 19.1 | 26.3 | 2 | 21.0 | 19.5 | 12 | 12.1 | 16 | | 45 | DR30H |
| CDD-33 | 19.1 | 26.3 | 2 | 21.0 | 19.5 | 12 | 12.1 | 16 | | 45 | DR33H |
| CDD-50 | 21.8 | 29.8 | 2 | 21.0 | 19.5 | 12 | 13.3 | 16 | | 50 | DR50H |
| CDD-85 | 23.4 | 33.3 | 2 | 24.8 | 23.0 | 12 | 14.9 | 20 | | 60 | DR85H |

DO NOT USE FOR CONSTRUCTION

CONSULT FACTORY FOR CERTIFIED PRINTS

CDD Direct Drive Downblast Fans

| PERFORMANCE | | | | | | | | | | | | | | | | | | | | | | | | | | | |
|-------------|------|-------|------|-----------|------|----------|------|-----------|------|----------|------|-----------|------|----------|------|-----------|------|----------|------|-----------|------|----------|------|---------|------|----------|------|
| | | 0" SP | | 0.125" SP | | 0.25" SP | | 0.375" SP | | 0.50" SP | | 0.625" SP | | 0.75" SP | | 0.875" SP | | 1.00" SP | | 1.125" SP | | 1.25" SP | | 1.5" SP | | 1.75" SP | |
| MODEL | CFM | RPM | BHP | RPM | BHP | RPM | BHP | RPM | BHP | RPM | BHP | RPM | BHP | RPM | BHP | RPM | BHP | RPM | BHP | RPM | BHP | RPM | BHP | RPM | BHP | RPM | BHP |
| CDD-10 | 250 | 786 | 0.01 | 1008 | 0.02 | 1196 | 0.03 | 1374 | 0.05 | 1534 | 0.07 | | | | | | | | | | | | | | | | |
| | 350 | 1097 | 0.03 | 1268 | 0.04 | 1417 | 0.06 | 1556 | 0.07 | | | | | | | | | | | | | | | | | | |
| | 450 | 1411 | 0.06 | 1546 | 0.07 | | | | | | | | | | | | | | | | | | | | | | |
| CDD-12 | 400 | 639 | 0.01 | 839 | 0.03 | 1000 | 0.04 | 1143 | 0.07 | 1266 | 0.09 | 1384 | 0.12 | 1493 | 0.15 | 1594 | 0.18 | | | | | | | | | | |
| | 600 | 957 | 0.04 | 1101 | 0.06 | 1230 | 0.08 | 1345 | 0.11 | 1449 | 0.14 | 1550 | 0.17 | | | | | | | | | | | | | | |
| | 800 | 1274 | 0.09 | 1384 | 0.12 | 1490 | 0.15 | 1587 | 0.18 | | | | | | | | | | | | | | | | | | |
| | 1000 | 1592 | 0.18 | | | | | | | | | | | | | | | | | | | | | | | | |
| CDD-30 | 800 | 926 | 0.05 | 1051 | 0.07 | 1163 | 0.09 | 1258 | 0.12 | 1345 | 0.14 | 1423 | 0.17 | 1495 | 0.19 | 1566 | 0.22 | | | | | | | | | | |
| | 1000 | 1157 | 0.09 | 1259 | 0.12 | 1355 | 0.14 | 1443 | 0.17 | 1522 | 0.20 | 1595 | 0.24 | | | | | | | | | | | | | | |
| | 1200 | 1389 | 0.16 | 1474 | 0.19 | 1556 | 0.22 | | | | | | | | | | | | | | | | | | | | |
| | 1400 | 1618 | 0.25 | | | | | | | | | | | | | | | | | | | | | | | | |
| CDD-33 | 600 | 731 | 0.03 | 882 | 0.05 | 1014 | 0.07 | 1124 | 0.10 | 1220 | 0.12 | 1307 | 0.15 | 1389 | 0.18 | 1467 | 0.22 | 1538 | 0.25 | 1609 | 0.29 | 1676 | 0.32 | | | | |
| | 800 | 974 | 0.06 | 1088 | 0.09 | 1201 | 0.12 | 1301 | 0.15 | 1391 | 0.19 | 1473 | 0.22 | 1547 | 0.26 | 1619 | 0.29 | 1688 | 0.33 | | | | | | | | |
| | 1000 | 1217 | 0.12 | 1307 | 0.15 | 1401 | 0.19 | 1490 | 0.23 | 1572 | 0.27 | 1650 | 0.31 | | | | | | | | | | | | | | |
| | 1200 | 1460 | 0.21 | 1535 | 0.25 | 1613 | 0.29 | 1690 | 0.33 | | | | | | | | | | | | | | | | | | |
| CDD-50 | 1000 | 666 | 0.03 | 792 | 0.06 | 895 | 0.08 | 986 | 0.11 | 1068 | 0.14 | 1144 | 0.17 | 1214 | 0.21 | 1282 | 0.25 | 1346 | 0.28 | 1406 | 0.32 | 1464 | 0.37 | | | | |
| | 1400 | 931 | 0.09 | 1026 | 0.13 | 1112 | 0.16 | 1188 | 0.20 | 1259 | 0.23 | 1325 | 0.27 | 1388 | 0.31 | 1448 | 0.35 | 1504 | 0.40 | 1559 | 0.44 | 1611 | 0.49 | | | | |
| | 1800 | 1197 | 0.20 | 1273 | 0.24 | 1344 | 0.28 | 1410 | 0.33 | 1472 | 0.37 | 1531 | 0.42 | 1586 | 0.46 | | | | | | | | | | | | |
| | 2200 | 1463 | 0.36 | 1524 | 0.41 | 1586 | 0.46 | | | | | | | | | | | | | | | | | | | | |
| CDD-85 | 1500 | 705 | 0.06 | | | 893 | 0.13 | | | 1038 | 0.20 | | | 1161 | 0.29 | | | 1271 | 0.38 | | | 1372 | 0.47 | 1466 | 0.58 | 1556 | 0.69 |
| | 1900 | 892 | 0.13 | | | 1049 | 0.21 | | | 1180 | 0.30 | | | 1293 | 0.39 | | | 1394 | 0.50 | | | 1488 | 0.60 | 1575 | 0.71 | | |
| | 2300 | 1080 | 0.23 | | | 1212 | 0.33 | | | 1331 | 0.43 | | | 1436 | 0.54 | | | 1529 | 0.65 | | | | | | | | |
| | 2700 | 1268 | 0.37 | | | 1382 | 0.48 | | | 1488 | 0.60 | | | 1585 | 0.73 | | | | | | | | | | | | |
| | 3100 | 1455 | 0.56 | | | 1555 | 0.69 | | | | | | | | | | | | | | | | | | | | |

ROOF & WALL EXHAUST FANS

RMD DIRECT DRIVE AXIAL EXHAUST FANS



Features & Benefits

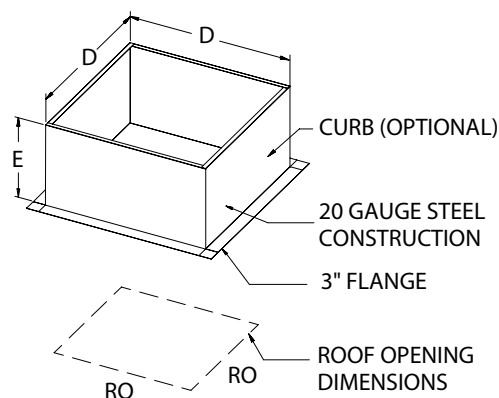
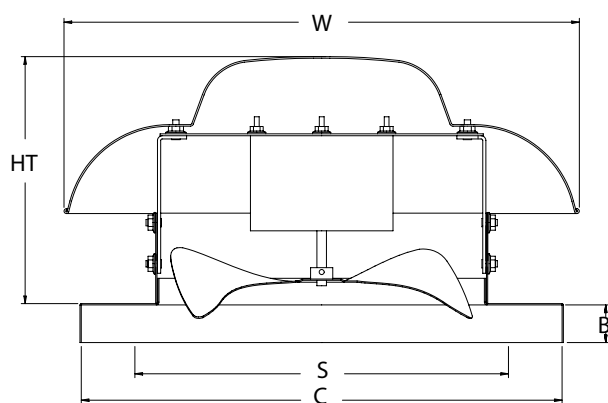
- Suitable for roof or wall mounting
- Axial impellers constructed with die formed blades riveted to a steel hub
- Spun aluminum housing for weather-resistant durability
- Bird screen
- Totally enclosed, permanently lubricated, ball bearing motor
- Disconnect switch
- 110 °F max. temperature rating
- Available in 115V 1 phase
- Diameters range from 10" to 18"
- Direct drive capacities to 2,400 cfm

RMD axial exhaust fans are suitable for roof or wall mounting in commercial ventilation applications such as mechanical room exhaust, warehouse exhaust and much more. They are the perfect low-cost choice for areas that have little or no ductwork.

Accessories / Options

- Gravity dampers
- Motorized dampers
- Wall mount brackets
- Roof curb

| MODEL | RPM | MTR HP | FLA | AIRFLOW PERFORMANCE (CFM) | | | | | | | |
|--------|------|--------|-----|---------------------------|-----------|----------|-----------|----------|-----------|----------|-----------|
| | | | | 0" SP | 0.125" SP | 0.25" SP | 0.375" SP | 0.50" SP | 0.625" SP | 0.75" SP | 0.875" SP |
| RMD-10 | 1500 | 1/30 | 1.1 | 500 | 339 | 267 | 173 | - | - | - | - |
| RMD-12 | 1500 | 1/10 | 1.2 | 830 | 710 | 620 | 522 | 436 | 357 | 270 | - |
| RMD-14 | 1100 | 1/6 | 2.2 | 1160 | 899 | 786 | 646 | 521 | 384 | 236 | - |
| RMD-18 | 1100 | 1/3 | 4.5 | 2400 | 2034 | 1628 | 1491 | 1293 | 1084 | 881 | 662 |



| DIMENSIONS IN INCHES | | | | | | | | | |
|----------------------|------|------|---|----|------|----|----|----------|------------------|
| MODEL | HT | W | B | C | D | E | RO | WT (lbs) | MANUFACTURE CODE |
| RMD-10 | 9.8 | 18.3 | 2 | 19 | 17.5 | 12 | 13 | 24 | DDAR10 |
| RMD-12 | 10.8 | 20.3 | 2 | 19 | 17.5 | 12 | 13 | 32 | DDAR12 |
| RMD-14 | 12.6 | 27.3 | 2 | 21 | 19.5 | 12 | 16 | 45 | DDAR14 |
| RMD-18 | 14.4 | 33.6 | 2 | 26 | 24.5 | 12 | 20 | 67 | DDAR18 |

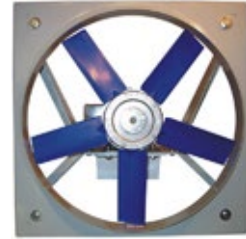
DO NOT USE FOR CONSTRUCTION

CONSULT FACTORY FOR CERTIFIED PRINTS

APK DIRECT DRIVE PANEL FANS

APK Direct Drive Panel Fans are the ideal solution for applications that require high efficiency and quiet operation. These panel fans deliver maintenance-free performance at an affordable price.

- Spark resistant, cast aluminum airfoil axial impeller
- Superior performance and sound characteristics
- Baked polyester powder coat finish
- GRP (polypropylene) blades available
- All-aluminum design available
- Custom designs available from 12" to 36"
- Capacities to 23,000 cfm from stock components



AFK DIRECT DRIVE FLANGE FANS

AFK Direct Drive Flange Fans deliver maximum performance in minimal space. A fully reversible double flange design provides exceptional strength and allows for duct mounting if needed.

- Spark resistant, cast aluminum airfoil axial impeller
- Superior performance and sound characteristics
- Baked polyester powder coat finish
- GRP (polypropylene) blades available
- Fully reversible design option available
- Sizes range from 12" to 42"
- Capacities to 34,000 cfm from stock components



TCD BC AIRFOIL BLOWERS

TCD BC Airfoil Blowers are precision balanced air-moving devices that feature superior performance and exceptional smoothness. Combined with high efficiency TEFC motors, TCD blowers set new standards for efficiency and sound.

- Direct drive, non-overloading 'TEK' impeller
- Highly efficient airfoil (BCA) design
- Epoxy coated steel housing
- Rugged GRP (polyamide) impeller
- Cast aluminum impeller hub w/bushing
- CW rotation; rotatable to 5 positions
- Capacities to 4,500 cfm



AID DIRECT DRIVE AXIAL IN-LINE FANS

AID Axial In-Line Fans offer the perfect solution where high efficiency and quiet operation are required. Commonly used to move large volumes of air at medium and high pressures, AID fans utilize airfoil adjustable pitch impellers to maximize performance.

- NEMA 4 junction box, pre-wired and mounted on fan
- Spark resistant, cast aluminum airfoil axial impeller
- Baked polyester powder coat finish
- GRP (polypropylene) impeller available
- Fully reversible airflow option
- Sizes range from 12" to 27"
- Capacities to 11,400 cfm

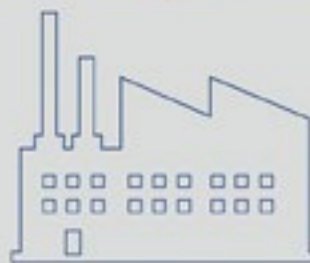




OEM Solutions & Custom Fans



Industrial Fans



Commercial Fans



Residential Fans



Wholesale Ventilation Products

Continental Fan Manufacturing Inc.
Buffalo, NY ~ Dayton, OH

Continental Fan Canada Inc.
Mississauga, ON

www.continentalfan.com
1-800-779-4021

Distributed by:

