

# DUCT FANS

## AXC IN-LINE DUCT FANS



### Features & Benefits

- Heavy gauge, drawn steel housing with baked epoxy finish
- 120V operation, other voltages available
- Easy to install - mounting brackets included
- May be mounted in any position
- Fans may be used to supply or exhaust air
- Suitable for air temperatures up to 140 °F / 60 °C
- Speed controllable (optional solid state speed control)
- Optional pre-wired with 120V power cord (AXC-C)
- Exceptionally quiet and efficient BC centrifugal motorized impeller
- External rotor motor design results in superior motor cooling and durability
- Permanently lubricated ball bearing motor for maintenance-free operation
- Automatic reset thermal overload protection
- Fan and motor are precision balanced for quiet and vibration-free operation
- Easily accessible, external junction box with pre-wired capacitor
- Available to fit duct sizes 4" - 12"; airflow capacities to 970 cfm

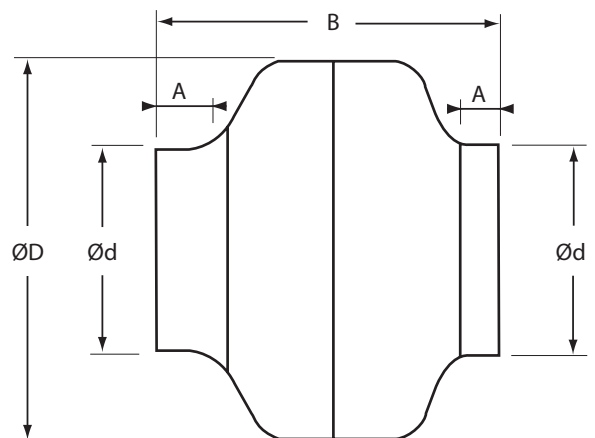
AXC fans are designed for residential, commercial and light industrial ventilation applications. The quiet, efficient backward-curved motorized impeller is capable of developing significant pressure, and the in-line configuration simplifies installation.

### Accessories & Controls ~ pages 22-23

MODEL	WATTS	RPM	AIRFLOW PERFORMANCE (CFM)								
			0" SP	0.2" SP	0.4" SP	0.6" SP	0.8" SP	1.0" SP	1.2" SP	1.5" SP	2.0" SP
AXC100A-ES	43.3	2580	147	130	107	82	57	34	11		
AXC100B	83.4	2620	150	140	127	112	94	74	53	23	
AXC125A-ES	44.4	2520	179	150	121	87	49	14			
AXC125B	85.4	2750	183	160	141	122	101	77	51	14	
AXC150A-ES	46.8	2390	235	190	148	97	44				
AXC150B-ES	89.2	2450	308	260	216	175	139	108	81	47	
AXC200A-ES	84.5	2500	368	300	234	184	149	114	70		
AXC200B-ES	188	2550	579	520	453	387	329	282	245	206	154
AXC250-ES	198	2470	616	550	488	431	379	330	286	227	143
AXC300A-ES	206	2450	780	700	595	420	330	290	255	210	132
AXC300B-ES	312	2780	970	910	803	680	559	453	367	273	164

FOR PRE-WIRED WITH 120V POWER CORD, ADD -C TO MODEL.

MODEL	DIMENSIONS IN INCHES				SHIP WT (lbs)
	ØD	Ød	A	B	
AXC100A-ES	9.5	3.9	1.0	8.3	7.5
AXC100B	9.5	3.9	1.0	8.3	8.0
AXC125A-ES	9.5	4.8	1.0	8.3	7.5
AXC125B	9.5	4.8	1.0	8.3	7.5
AXC150A-ES	9.5	5.8	1.0	8.3	7.5
AXC150B-ES	13.2	5.8	1.0	9.1	12.5
AXC200A-ES	13.2	7.8	1.0	9.1	12.0
AXC200B-ES	13.2	7.8	1.0	9.1	15.0
AXC250-ES	13.2	9.8	1.0	9.1	15.0
AXC300A-ES	15.9	11.8	1.2	11.8	18.0
AXC300B-ES	15.9	11.8	1.2	11.8	18.0



DO NOT USE FOR CONSTRUCTION  
CONSULT FACTORY FOR CERTIFIED PRINTS



**AXS EC IN-LINE DUCT FANS**



With its efficient electronically commutated (EC) motorized impeller, AXS EC fans set new standards for efficiency and versatility. The efficient backward-curved impeller can develop significant pressure. AXS EC fans are suitable for residential, commercial and light industrial ventilation applications.

**Features & Benefits**

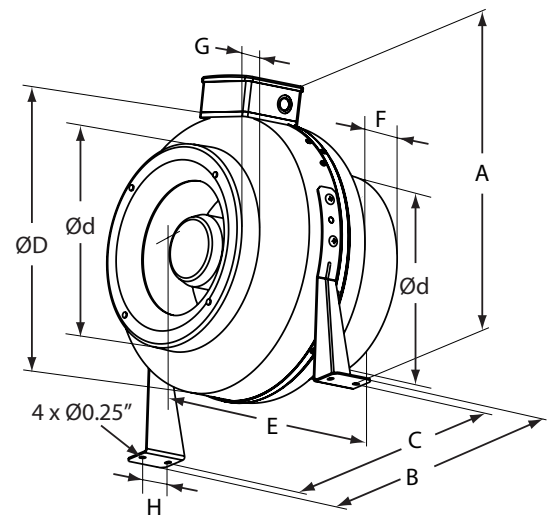
- Efficient electronically commutated (EC) motorized impeller
- Energy efficient
- Corrosion resistant, durable steel housing with polymer coating
- 120V, 60 Hz operation; single phase
- Easy to install - mounting brackets included
- Suitable for air temperatures up to 105 °F
- Optional pre-wired with 120V power cord (AXS-EC-C)
- Speed controllable 0-10 V
- External rotor motor design results in superior motor cooling
- Rated for continuous operation
- Permanently lubricated ball bearing motor for maintenance-free operation
- Automatic reset thermal overload protection
- Fan and motor are precision balanced for quiet, vibration-free operation
- Available to fit duct sizes 4" -12"
- Airflow capacities to 801 cfm

**Accessories & Controls ~ pages 22-23**

MODEL	WATTS	RPM	AIRFLOW PERFORMANCE (CFM)										
			0" SP	0.125" SP	0.2" SP	0.25" SP	0.375" SP	0.5" SP	0.75" SP	1.0" SP	1.25" SP	1.5" SP	2.5" SP
AXS100-EC	33.0	2760	151	141	135	130	120	110	90	70	49	29	
AXS125-EC	57.1	3396	248	239	231	225	211	198	170	143	115	88	
AXS150-EC	75.1	3336	306	299	291	285	272	258	231	204	176	149	40
AXS200-EC	99.0	2820	539	510	494	484	458	432	380	328	277	225	18
AXS250-EC	133.6	2628	667	600	586	577	553	530	484	438	392	346	161
AXS300-EC	173.5	2796	801	741	726	716	690	665	614	563	512	461	257

WATTS AND RPM ARE SHOWN AT 0.2" SP  
FOR PRE-WIRED WITH 120V POWER CORD, ADD -C TO MODEL.

MODEL	DIMENSIONS IN INCHES										SHIP WT (lbs)
	DUCT DIA.	ØD	Ød	A	B	C	E	F	G	H	
AXS100-EC	4"	10.0	3.9	13.4	12.2	10.6	8.0	0.8	1.0	1.2	7.0
AXS125-EC	5"	10.0	4.8	13.4	12.2	10.6	8.0	0.8	1.0	1.2	6.8
AXS150-EC	6"	12.0	5.8	14.2	14.2	12.6	7.9	0.8	1.0	1.2	8.2
AXS200-EC	8"	13.6	7.8	17.1	15.6	14.0	9.6	1.0	1.2	1.6	11.2
AXS250-EC	10"	13.6	9.8	17.1	15.6	14.0	9.8	1.0	1.2	1.6	12.8
AXS300-EC	12"	15.9	11.9	18.3	17.9	16.3	10.2	1.2	1.2	1.6	15.8



DO NOT USE FOR CONSTRUCTION  
CONSULT FACTORY FOR CERTIFIED PRINTS



## AXP IN-LINE DUCT FANS



### Features & Benefits

- UV and corrosion resistant, durable plastic housing
- 120V operation, other voltages available
- Easy to install - mounting brackets included
- May be mounted in any position
- Fans may be used to supply or exhaust air
- Suitable for air temperatures up to 122 °F
- Energy efficient - speed controllable (optional solid state speed control)
- Optional pre-wired with 120V power cord (AXP-C)
- Exceptionally quiet and efficient BC centrifugal motorized impeller
- External rotor motor design results in superior motor cooling
- Permanently lubricated ball bearing motor for maintenance-free operation
- Automatic reset thermal overload protection
- Fan and motor are precision balanced for quiet, vibration-free operation
- Easily accessible, external junction box with pre-wired capacitor
- Available to fit duct sizes 4" - 12"; airflow capacities to 871 cfm

AXP fans are designed for residential, commercial and light industrial ventilation applications. The quiet, efficient backward-curved motorized impeller is capable of developing significant pressure, and the in-line configuration simplifies installation.

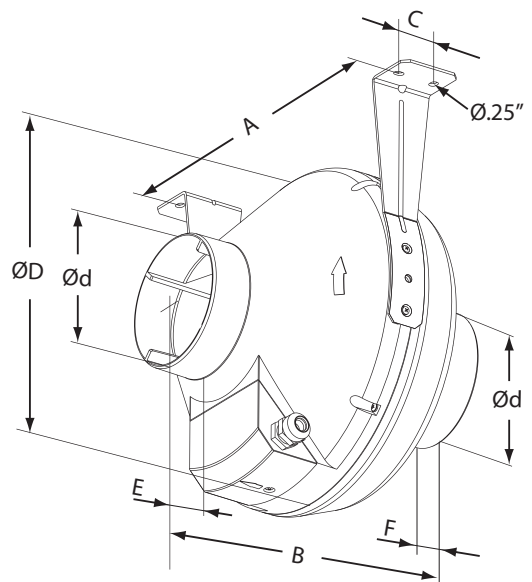
### Accessories & Controls ~ pages 22-23

MODEL	WATTS	RPM	AIRFLOW PERFORMANCE (CFM)										
			0" SP	0.1" SP	0.2" SP	0.3" SP	0.4" SP	0.5" SP	0.6" SP	0.7" SP	0.8" SP	0.9" SP	1.0" SP
AXP100	88.5	2872	193	184	176	167	158	148	140	131	122	114	105
AXP125	114	2960	235	220	214	198	185	178	167	156	145	134	123
AXP150	93	2785	321	307	290	272	255	237	222	206	193	175	159
AXP200	149	2781	562	536	520	501	472	451	424	397	372	347	329
AXP250	266	2523	683	653	620	588	551	518	487	453	423	394	368
AXP300	286	2641	871	825	867	736	683	645	569	515	476	430	388

WATTS AND RPM ARE SHOWN AT 0.2" SP  
FOR PRE-WIRED WITH 120V POWER CORD, ADD -C TO MODEL.

MODEL	DIMENSIONS IN INCHES								SHIP WT (lbs)
	DUCT DIA.	ØD	Ød	A	B	C	E	F	
AXP100	4"	9.8	3.9	10.6	9.1	1.2	1.2	1.1	7.0
AXP125	5"	9.8	4.9	10.6	8.7	1.2	1.2	1.1	7.0
AXP150	6"	11.8	5.9	12.2	11.3	1.2	1.2	1.2	8.0
AXP200	8"	13.4	7.9	13.9	10.9	1.6	1.2	1.2	9.0
AXP250	10"	13.4	9.8	13.9	10.4	1.6	1.2	1.2	12.0
AXP300*	12"	15.8	12.3	16.3	16.3	1.6	1.6	2.2	14.0

\*INCLUDES 2 DUCT REDUCERS TO FIT 12" DUCT  
DO NOT USE FOR CONSTRUCTION  
CONSULT FACTORY FOR CERTIFIED PRINTS





## MBI CENTRIFUGAL IN-LINE FANS



### Features & Benefits

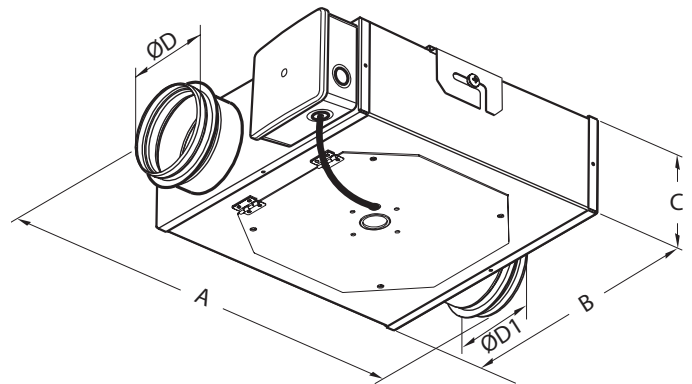
- Steel housing with corrosion resistant finish
- 120V operation, other voltages available
- Removable fan cover for easy maintenance
- Easy to install - mounting brackets included
- Multiple source ducting options
- Fans may be used to supply or exhaust air
- Suitable for air temperatures up to 140 °F
- Energy efficient - speed controllable (optional solid state speed control)
- Exceptionally quiet and efficient BC centrifugal motorized impeller
- Single-phase asynchronous external rotor motor
- Permanently lubricated ball bearing motor for maintenance-free operation
- Automatic reset thermal overload protection
- Fan and motor are precision balanced for quiet, vibration-free operation
- Easily accessible, external junction box with pre-wired capacitor
- Available to fit duct sizes 4", 5" & 6"; airflow capacities to 290 cfm

MBI fans are designed for residential and light commercial ventilation applications. Multiple source ducting options offer the perfect solution for whole house ventilation in multi-unit housing complexes.

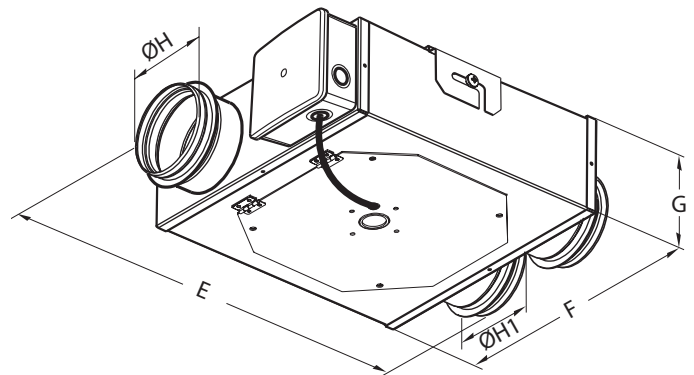
### Accessories & Controls ~ pages 22-23

MODEL	WATTS	RPM	AIRFLOW PERFORMANCE (CFM)									
			0" SP	0.125" SP	0.20" SP	0.25" SP	0.50" SP	0.75" SP	1.0" SP	1.25" SP	1.5" SP	1.75" SP
MBI100	105	3090	147	143	139	137	123	110	99	90	76	56
MBI125	113	2920	173	169	165	162	147	126	106	85	58	30
MBI150	110	2020	221	214	206	200	171	145	120	92	65	36
MBI125/100	117	2920	232	225	219	216	197	173	148	125	99	73
MBI150/125	110	2155	290	273	262	252	211	178	146	114	84	57

IN-LINE BOOSTER FAN							
DIMENSIONS IN INCHES							
MODEL	DUCT DIA.	A	B	C	ØD	ØD1	SHIP WT (lbs)
MBI100	4"	16.5	9.9	5.2	3.9	3.9	12.0
MBI125	5"	16.5	9.9	5.2	4.9	4.9	12.0
MBI150	6"	18.9	12.0	6.7	5.9	5.9	16.0



TWIN INTAKE FAN							
DIMENSIONS IN INCHES							
MODEL	DUCT DIA.	E	F	G	ØH	ØH1	SHIP WT (lbs)
MBI125/100	5" / 4"	16.5	9.9	5.2	4.9	3.9	12.0
MBI150/125	6" / 5"	18.9	11.8	6.7	5.9	4.9	16.0



DO NOT USE FOR CONSTRUCTION  
CONSULT FACTORY FOR CERTIFIED PRINTS



**EXM EXTERNAL MOUNT DUCT FANS**



EXM external mount duct fans offer the perfect solution when limited space prevents the use of an in-line duct fan. Access and maintenance are simplified with the through-the-wall design of an EXM fan that mounts on an exterior wall.

**Features & Benefits**

- Steel housing with polymer coating
- Removable fan cover for easy maintenance
- Sidewall mounted on the exterior of a building
- Quiet and efficient BC centrifugal motorized impeller
- External rotor motor design results in superior motor durability
- Suitable for air temperatures up to 113 °F
- 120V, 60 Hz; single phase operation
- Permanently lubricated ball bearing motor for maintenance-free operation
- Automatic reset thermal overload protection
- IP X4 protection
- Fits 4", 5", 6" & 8" duct
- Airflow capacity to 306 cfm
- Two-year warranty

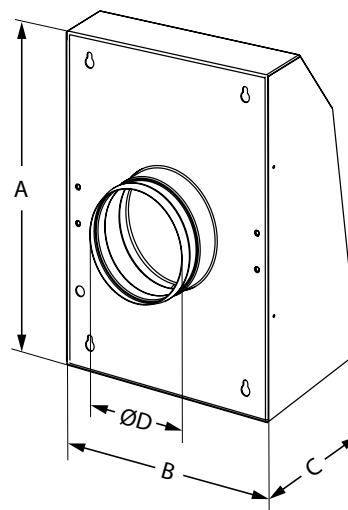
**Accessories & Controls ~ pages 22-23**

MODEL	WATTS	RPM	AIRFLOW PERFORMANCE (CFM)				
			0" SP	0.25" SP	0.5" SP	1.0" SP	1.5" SP
EXM100	108	3100	238	223	204	134	30
EXM125	108	2950	248	231	213	146	25
EXM150	109	2250	302	286	256	159	27
EXM200	106	2300	306	291	258	148	9

RPM AND WATTS ARE SHOWN AT 0.2" SP

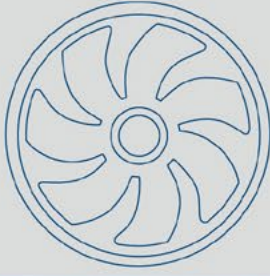
MODEL	DIMENSIONS IN INCHES					SHIP WT (lbs)
	DUCT DIA.	ØD	A	B	C	
EXM100	4"	3.9	14.0	10.3	5.4	9.0
EXM125	5"	4.9	14.0	10.3	5.4	9.0
EXM150	6"	5.9	15.8	11.8	5.4	9.9
EXM200	8"	7.9	15.8	11.8	5.4	9.9

DO NOT USE FOR CONSTRUCTION  
CONSULT FACTORY FOR CERTIFIED PRINTS



**RESIDENTIAL & COMMERCIAL VENTILATION APPLICATIONS:**

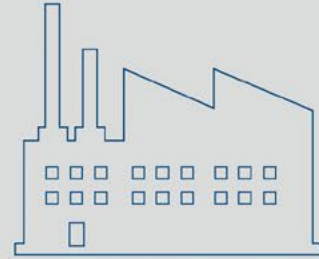
- Bathroom exhaust
- Kitchen ventilation
- Crawl space ventilation
- Whole house ventilation
- Garages
- Office
- Warehouse
- Restaurant



**OEM Solutions  
& Custom Fans**



**Industrial  
Fans & Blowers**



**Commercial  
Fans & Dampers**



**Residential  
Fans & Air Purifiers**



**Wholesale Ventilation Products**

Continental Fan Manufacturing Inc.  
Buffalo, NY ~ Dayton, OH

Continental Fan Canada Inc.  
Mississauga, ON

[www.continentalfan.com](http://www.continentalfan.com)  
1-800-779-4021

Distributed by:

